



TL96273/TL96323/TL96373/TL96423/TL96473

Parts checklist

Your package contains:

- Handset
(2 for TL96273)
(3 for TL96323/TL96373)
(4 for TL96423/TL96473)
- Charger with power adapter
(1 for TL96273)
(2 for TL96323/TL96373)
(3 for TL96423/TL96473)
- Telephone base
- Telephone line cord
- Telephone base power adapter
- Battery compartment cover
(2 for TL96273)
(3 for TL96323/TL96373)
(4 for TL96423/TL96473)
- Battery
(2 for TL96273)
(3 for TL96323/TL96373)
(4 for TL96423/TL96473)
- Wall-mount bracket
- Abridged user's manual
- Quick start guide

Basic steps to set up & operate your phone

Basic installation

- 1 Install telephone base & charger
- 2 Install handset battery
- 3 Install telephone base on the wall (optional)

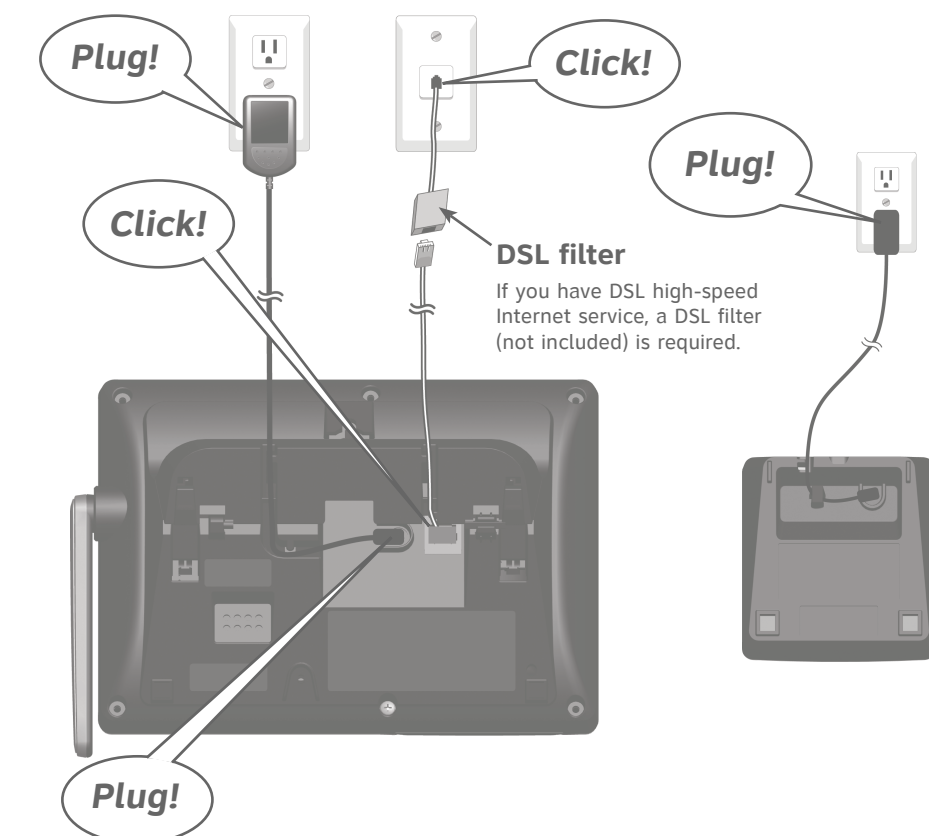
Common settings

- 4** Set date and time
- 5** Set ringer volume
- 6** Add a Bluetooth® cell phone / headset
- 7** Download a cell phone directory
- 8** Record own announcement
- 9** Set number of rings

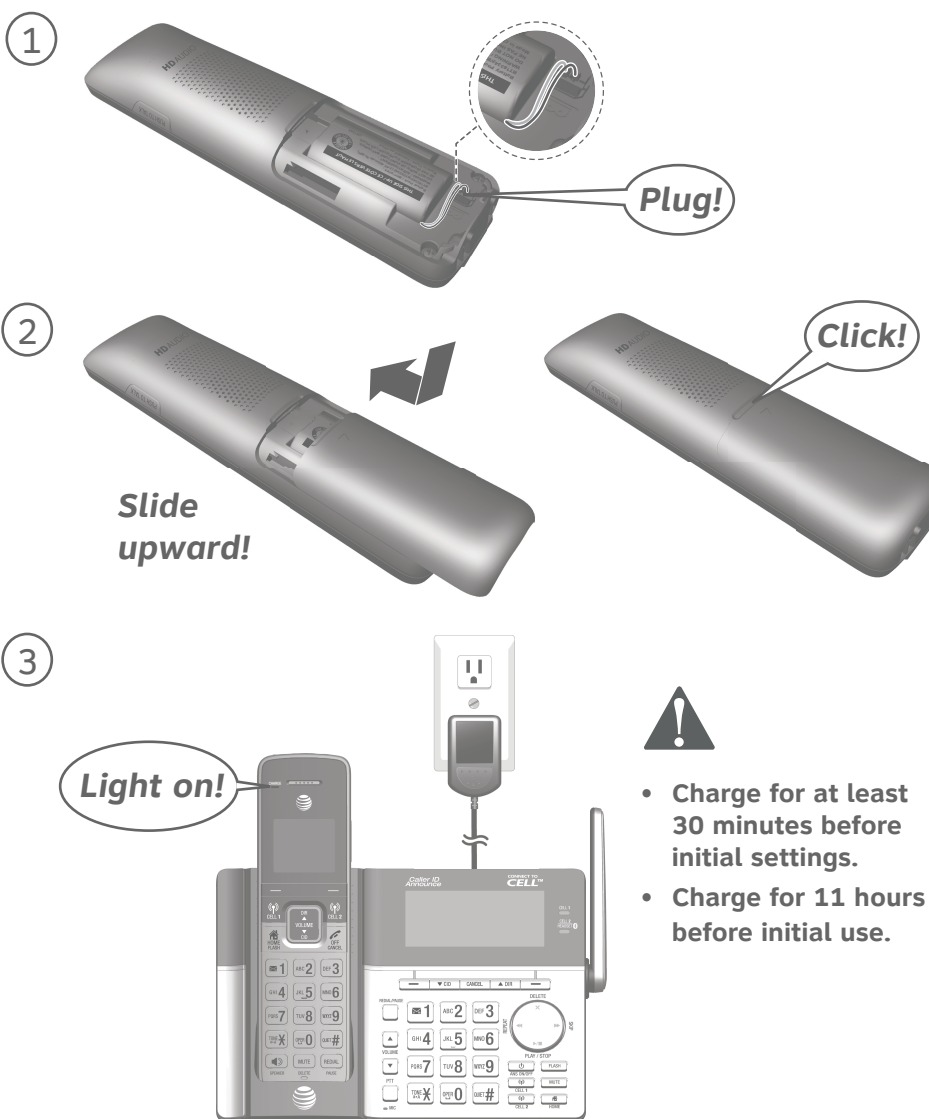
Common operations

- 10** **Directory**
- 11** **Caller ID**

1 Install telephone base & charger

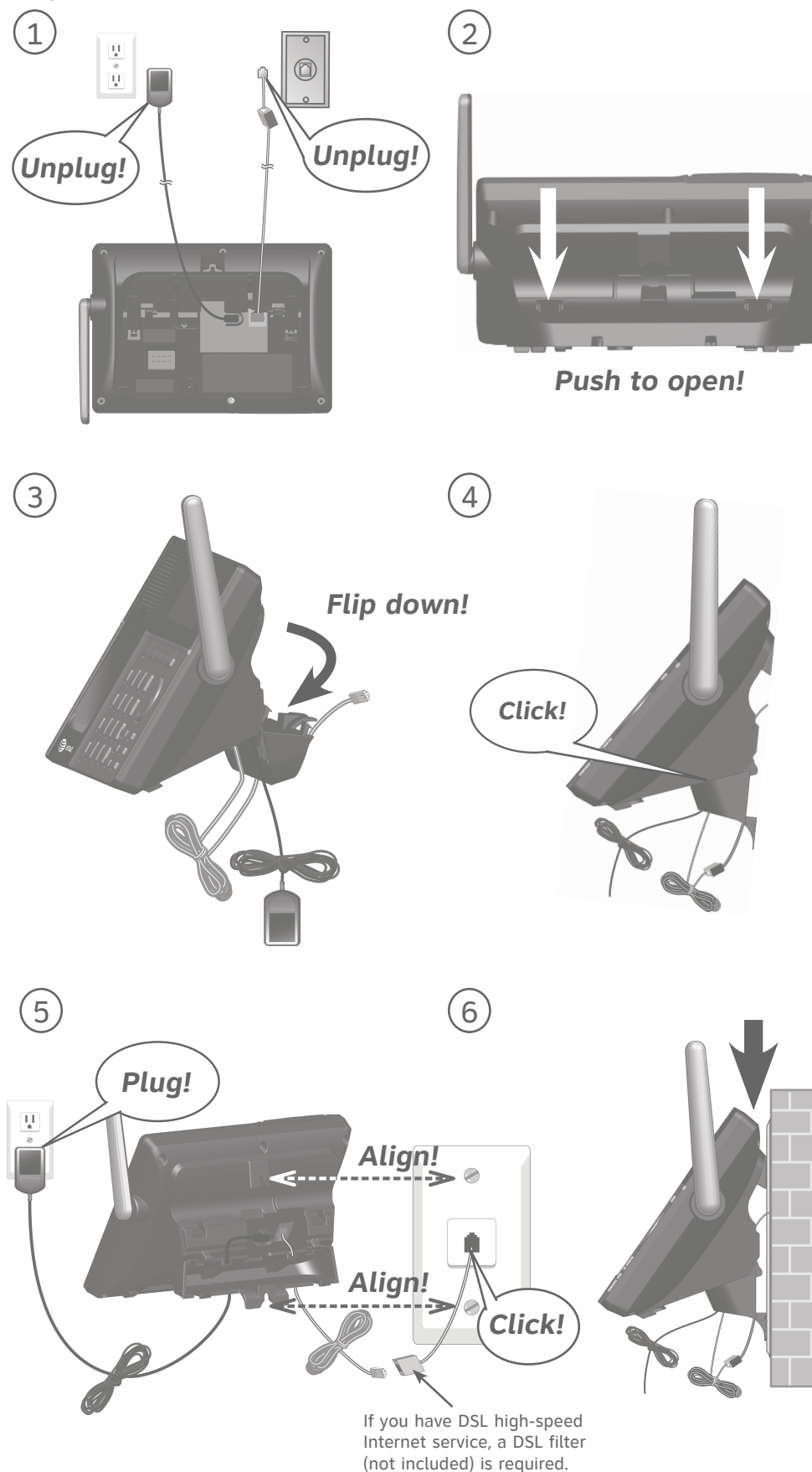


2 Install handset battery



3 Install telephone base on the wall (optional)

Refer to the following instructions only if you would like to mount the telephone on a wall.



INSTALLATION COMPLETED!
Keep reading for common settings and operations.

4 Set date and time

Set the date/time before using the answering system.

Using a cordless handset or the telephone base:

1. Press **MENU** -> Press **▼/▲** to **Set date/time** -> Press **SELECT**.
2. Enter the month (**MM**), day (**DD**) and year (**YY**) -> Press **NEXT**.
3. Enter the hour (**HH**) and minute (**MM**).
4. Press **▼/▲** to choose **AM** or **PM** -> Press **SAVE**.

5 Set ringer volume

You can set the ringer volume level to one of the six levels or turn the ringer off.

Using a cordless handset or the telephone base:

1. Press **MENU** -> Press **▼/▲** to **Ringers** -> Press **SELECT**.
2. Press **SELECT** to select **Ringer volume**.
3. Press **▼/▲** to choose the desired level -> Press **SET**.

6 Add a Bluetooth cell phone / headset

To use a Bluetooth enabled cellular phone or headset with your telephone, you must first pair and connect your Bluetooth cellular phone or headset with the telephone base.

Bluetooth wireless technology operates within a short range (up to 30 feet). Keep the connected device within 15 feet of the telephone base for optimal performance.

To pair and connect a cell phone using the telephone base:

1. Press **MENU** -> Press **▼/▲** to **Bluetooth** -> Press **SELECT**.
2. Press **SELECT** to select **Add device**.
3. Press **SELECT** to select **Add cellular**.
4. Disconnect the cell phone from any Bluetooth device -> Press **NEXT**.
5. Place the cell phone next to the telephone base.
6. Press **NEXT** to turn on the telephone base discoverable mode.
7. Turn on the Bluetooth feature of your cell phone and search for or add new devices. Once your cell phone finds your AT&T phone (**AT&T DECT 6.0**), press the appropriate key on your cell phone to continue the pairing process.
 - Enter the cell phone passcode (typically **0000**), if required -> Press **SET**.
 - Enter the PIN (default PIN: **0000**) of the telephone base into your cell phone, if required.

To pair and connect a headset using the telephone base:

1. Press **MENU** -> Press **▼/▲** to **Bluetooth** -> Press **SELECT**.
2. Press **SELECT** to select **Add device**.
3. Press **▼/▲** to **Add headset** -> Press **SELECT**.
4. Disconnect your headset from any Bluetooth device -> Press **NEXT**.
5. Set your headset to discoverable mode -> Press **NEXT**.
6. Press **▼/▲** to choose your headset, if required -> Press **SELECT**.
 - Enter the PIN (typically **0000**) of your headset, if required, and press **NEXT**.

7

Download a cell phone directory

Before downloading a directory, make sure the cell phone is paired, active, and connected to your TL96273/TL96323/TL96373/TL96423/TL96473.

- To download a cell phone directory using the telephone base:**
- Press **MENU** -> Press ▼/▲ to **Bluetooth** -> Press **SELECT**.
 - Press ▼/▲ to **Download dir** -> Press **SELECT**.
 - Press ▼/▲ to choose among **Phone memory**, **SIM card only** or **Phone and SIM** -> Press **SELECT**.
 - Press **NEXT** to start downloading, if necessary.
 - Press a key on your cellphone to confirm the directory download, if required.
 - Enter the cell phone passcode, if necessary, then press **Set**.
 - Press **OK** to exit.

If you are using Bluetooth-enabled cell phones with Android® OS 2.3 or above, you may also download the **Connect to Cell™** application (consists of **Caller ID manager** and **Alerts manager**) using the Google Play® Store app to extend the flexibility of your TL96273/TL96323/TL96373/TL96423/TL96473. Scan the QR code on the right to download the application.



8

Record own announcement

You can use the preset announcement to answer calls, or replace it with your own recorded announcement.

- Using a cordless handset or the telephone base:**
- Press **MENU** -> Press ▼/▲ to **Answering sys** -> Press **SELECT**.
 - Press **SELECT** to select **Announcement**.
 - Press **SELECT** to select **Record annnc**.
 - Facing the handset or telephone base, record your announcement and press **STOP** to end recording.

9

Set number of rings

You can set the answering system to answer an incoming call after 2, 3, 4, 5 or 6 rings, or toll saver. If you choose toll saver, the answering system answers a call after two rings when you have new messages, or after four rings when there are no new messages. This enables you to check for new messages and avoid paying unnecessary long distance charges if you are calling from out of your local area.

- Using a cordless handset or the telephone base:**
- Press **MENU** -> Press ▼/▲ to **Answering sys** -> Press **SELECT**.
 - Press ▼/▲ to **Ans sys setup** -> Press **SELECT**.
 - Press ▼/▲ to **# of rings** -> Press **SELECT**.
 - Press ▼/▲ to choose among **6, 5, 4, 3, 2** or **Toll saver** -> Press **SELECT**.

SETUP DONE!

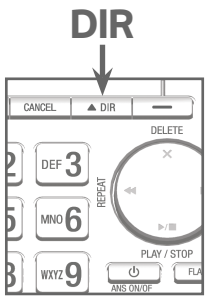
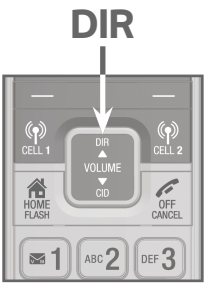
Keep reading for some common operations.

10

Directory

- The directory stores up to 200 entries.
- To add an entry in the home directory:**
- Using a cordless handset or the telephone base:**
- Press **MENU** -> Press ▼/▲ to **Directory** -> **SELECT**.
 - Press **OPTION** to select **Home**.
 - Press **SELECT** to select **Add contact**.
 - Enter a telephone number -> Press **NEXT**.
 - Press ▼/▲ to select **Home**, **Cell**, **Work** or **Other** -> Press **NEXT**.
 - Enter a name -> Press **SAVE**.

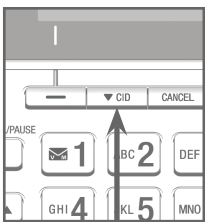
- To review and dial a directory entry:**
- Using a cordless handset or the telephone base:**
- Press **DIR** in idle mode -> Press ▼/▲ to select the desired directory -> Press **REVIEW**.
 - Press ▼/▲ to browse through the directory, or press the dialing keys to start a name search.
 - Press **HOME** or **/SPEAKER** on the handset, or press **HOME** on the telephone base to call using the home line.
 - OR-
 - Press **CELL 1** or **CELL 2** to call using the cell line.



11

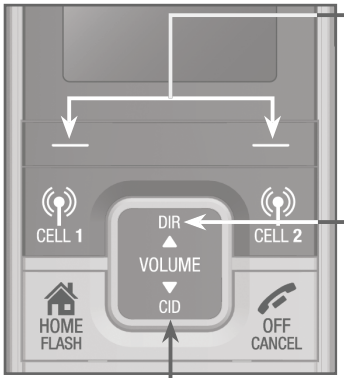
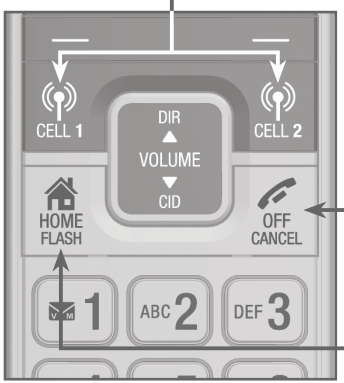
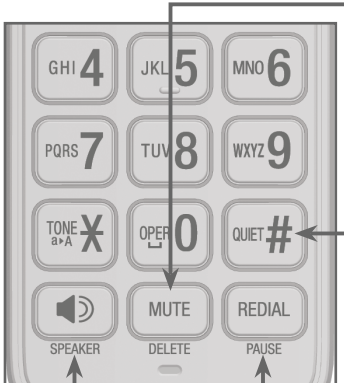
Caller ID

- The caller ID log stores up to 50 entries.
- To review and dial a caller ID entry:**
- Using a cordless handset or the telephone base:**
- Press **CID** in idle mode -> Press ▼/▲ to scroll through the list.
 - Press **HOME** or **/SPEAKER** on the handset, or press **HOME** on the telephone base to dial with the home line.
 - OR-
 - Press **CELL 1** or **CELL 2** to dial with the cell line.



- To erase the missed call indicator:**
- Using a cordless handset or the telephone base:**
- The screens display **XX missed calls** when you have incoming calls that have not been answered. When you have reviewed all the missed calls, the missed call indicator is erased.
- If you want to erase the missed call indicator without reviewing the caller ID log, press and hold **CANCEL** in idle mode.

Handset operation

- 
- Show the menu.
 - Select an item or save an entry or setting in a menu.
 - Review the directory.
 - Increase the listening volume.
 - Review the caller ID log.
 - Decrease the listening volume.
 - Make or answer a cell call.
 - Answer an incoming CELL 1/CELL 2 call during a CELL 1/CELL 2 call.
 - End a home or cell call.
 - Make or answer a home call.
 - Answer a call waiting call during a home call.
 - Mute a call.
 - Delete a digit or character.
 - Press and hold to set **QUIET** mode or to deactivate **QUIET** mode.
 - Press repeatedly to review the redial list.
 - Add a dialing pause while dialing or entering a number.
 - Make a home call using the speakerphone.
 - Answer a home or cell call using the speakerphone.
- 
- 

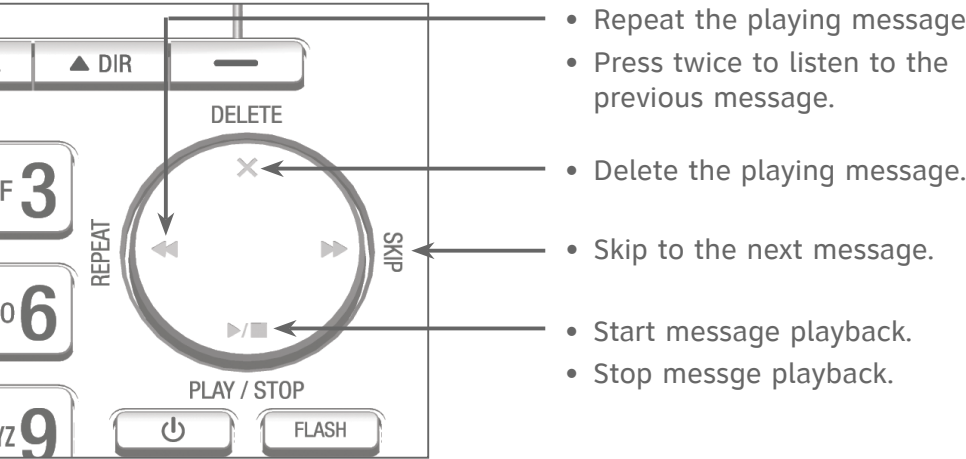
Answering system operation

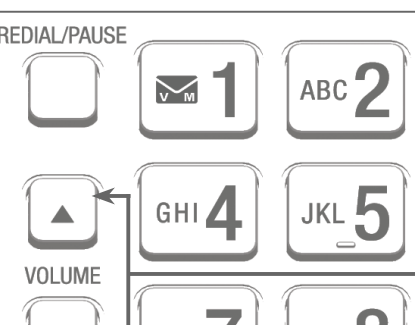
Your telephone has a built-in answering system and supports voicemail feature offered by your telephone service provider (subscription is required, and fees may apply).

- Answering system and voicemail**
- To use the built-in answering system:**
- Refer to this Quick start guide for basic instructions. For complete instructions, see the Abridged user's manual in the package or the Complete user's manual at www.telephones.att.com/manuals.

- To use the voicemail:**
- Press and hold **1** to dial the preset voicemail number, and then enter a security code. Contact your telephone service provider for detailed information.

The built-in answering system must be turned on to answer and record messages.



- 
- Repeat the playing message.
 - Press twice to listen to the previous message.
 - Delete the playing message.
 - Skip to the next message.
 - Start message playback.
 - Stop msgsg playback.
 - Turn the answering system on or off.
 - Adjust the speaker volume.

For more detailed instructions, please refer to the Abridged user's manual provided in your package, or for a full set of installation and operation instructions, refer to the online **TL96273/TL96323/TL96373/TL96423/TL96473 DECT 6.0 cordless telephone/answering system with BLUETOOTH® wireless technology** Complete user's manual at www.telephones.att.com/manuals.

For customer service or product information, visit our website at www.telephones.att.com or call **1 (800) 222-3111**. In Canada, dial **1 (866) 288-4268**.

The *Bluetooth®* word mark and logos are owned by Bluetooth SIG, Inc. and any use of such marks by Advanced American Telephones and its parent, VTech Holdings Limited, is under license. VTech Holdings Limited is a member of Bluetooth SIG, Inc. Other trademarks and trade names are those of their respective owners.

© 2013-2015 Advanced American Telephones. All Rights Reserved.
AT&T and the AT&T logo are trademarks of AT&T Intellectual Property licensed to Advanced American Telephones, San Antonio, TX 78219.
Android® and Google Play® are registered trademarks of Google Inc.
Connect to Cell™ is a trademark of Advanced American Telephones.
Printed in China. Issue 3.0 AT&T 05/15.