



# AT&T

## Quick start guide

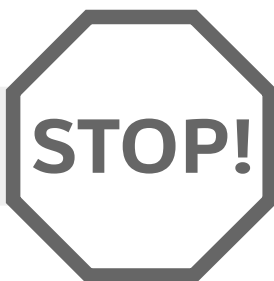
ML17928

Two-line corded telephone  
with caller ID/call waiting



# Installation preparation

You must install the power adapter before using the telephone.



See pages 3-4 for easy instructions.

If you subscribe to high speed Internet service (DSL - digital subscriber line) through your telephone line, you must install a DSL filter between each telephone line cord and telephone wall jack (pages 3 and 4). The filter prevents noise and caller ID problems caused by DSL interference. Please contact your DSL service provider for more information about DSL filters.

Your product may be shipped with a protective sticker covering the telephone base display - remove it before use.

For customer service or product information, visit our website at **[www.telephones.att.com](http://www.telephones.att.com)** or call **1 (800) 222-3111**. In Canada, dial **1 (866) 288-4268**.

## **Avoid placing the telephone base too close to:**

- Communication devices such as television sets, VCRs, or cordless telephones.
- Excessive heat sources.
- Noise sources such as a window with traffic outside, motors, microwave ovens, refrigerators, or fluorescent lighting.
- Excessive dust sources such as a workshop or garage.
- Excessive moisture.
- Extremely low temperature.
- Mechanical vibration or shock such as on top of a washing machine or work bench.

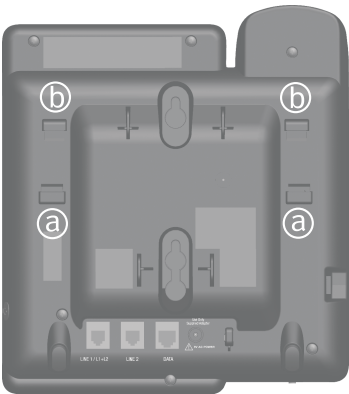
This quick start guide provides basic instructions. For additional installation options and complete instructions that enable you to use all features of this telephone, refer to your AT&T ML17928 Two-line corded telephone with caller ID/call waiting user's manual.

# Telephone installation

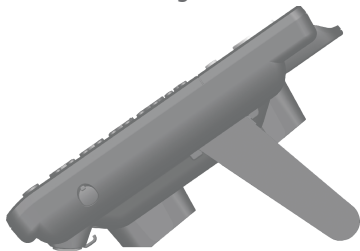
## Telephone base installation

1. Install the mounting bracket for tabletop use.

**Option 1:** To install your telephone in a low tabletop position, insert the fixed tabs of the mounting bracket into the slots labeled (a). Press the flexible tabs into the slots labeled (b) until they click into place.

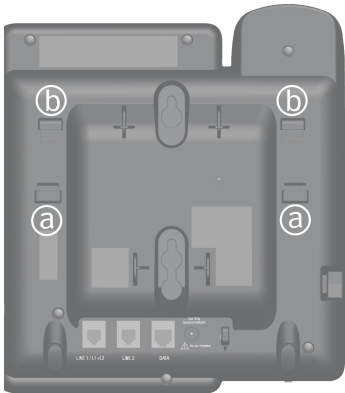


Mounting bracket



Option 1: Low tabletop position

**Option 2:** To install your telephone in a high tabletop position, insert the fixed tabs of the mounting bracket into the slots labeled (b). Press the flexible tabs into the slots labeled (a) until they click into place.



Mounting bracket



Option 2: High tabletop position

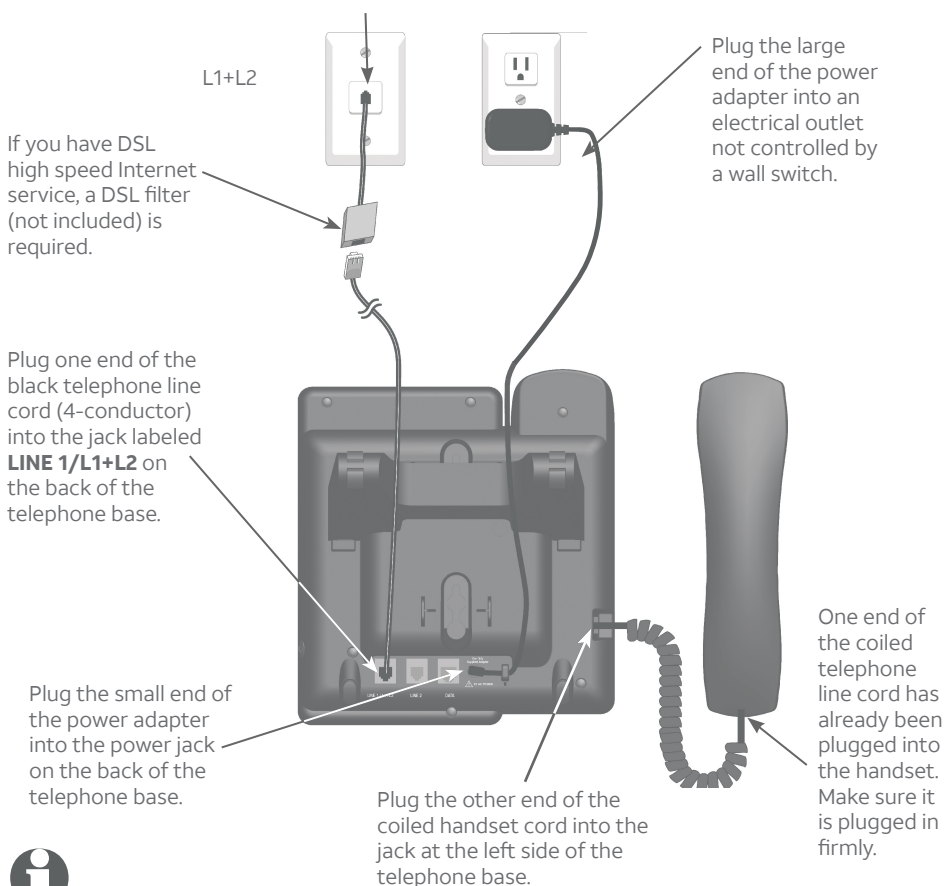
# Telephone installation

2. Connect the telephone line cord(s) and the power cord to the telephone base.

If you subscribe to high speed Internet service (DSL - digital subscriber line) through your telephone line, you must install a DSL filter between each telephone line cord and telephone wall jack. The filter prevents noise and caller ID problems caused by DSL interference. Please contact your DSL service provider for more information about DSL filters.

**Option 1:** If you have a two-line wall jack, install your telephone base, as shown below.

Plug the other end of the black telephone line cord (4-conductor) into the wall jack.

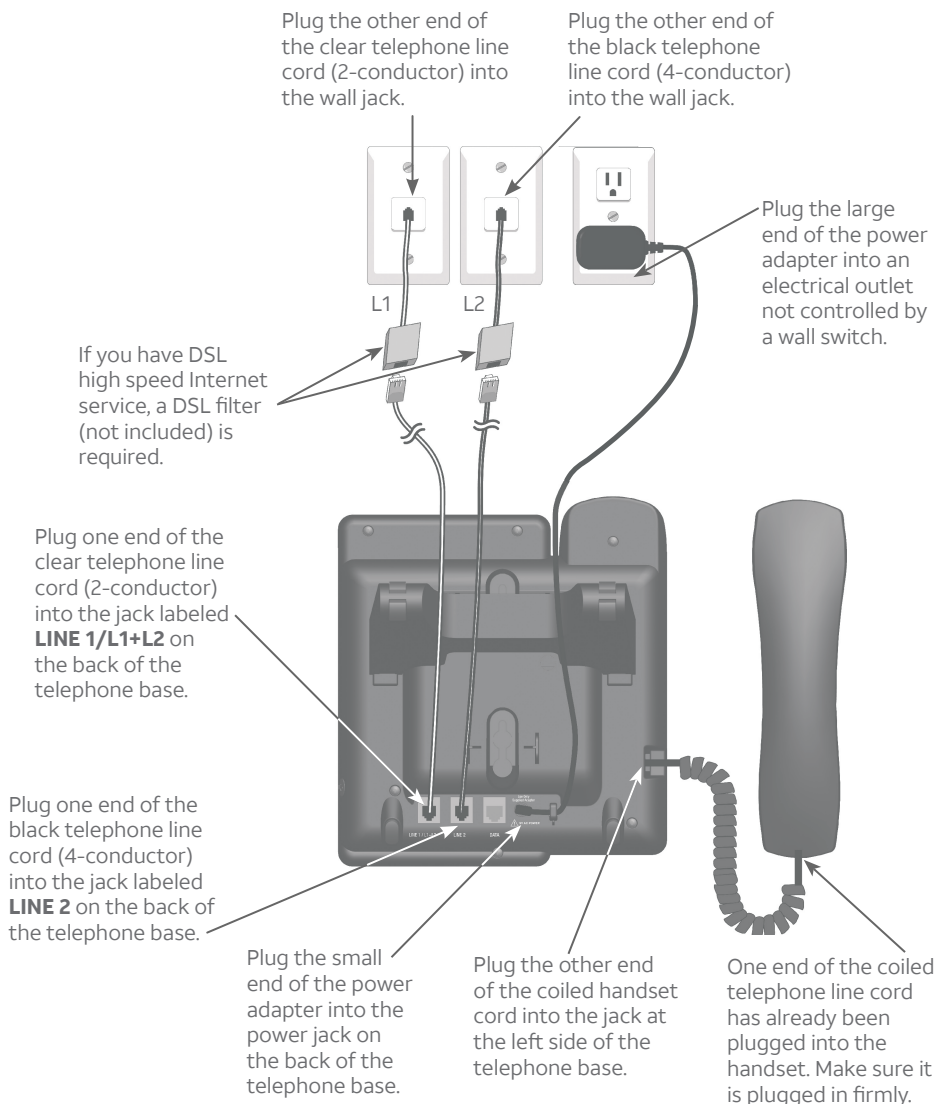


## NOTES:

- Use only the power adapter supplied with this product. To order a replacement power adapter, visit our website at **[www.telephones.att.com](http://www.telephones.att.com)**, or call **1 (800) 222-3111**. In Canada, dial **1 (866) 288-4268**.
- The power adapter is intended to be correctly oriented in a vertical or floor mount position. The prongs are not designed to hold the plug in place if it is plugged into a ceiling, under-the-table or cabinet outlet.

# Telephone installation

**Option 2:** If you have two one-line wall jacks, install your telephone base, as shown below.



## NOTES:

- Use only the power adapter supplied with this product. To order a replacement power adapter, visit our website at **[www.telephones.att.com](http://www.telephones.att.com)**, or call **1 (800) 222-3111**. In Canada, dial **1 (866) 288-4268**.
- The power adapter is intended to be correctly oriented in a vertical or floor mount position. The prongs are not designed to hold the plug in place if it is plugged into a ceiling, under-the-table or cabinet outlet.

# Quick reference guide

## CID/◀

Press to display call history information when the telephone is idle.

When entering numbers or names, press to move the cursor to the left.

## LINE 1, LINE 2

Press to make or answer a call on the selected line.

## CONF

Press to initiate a three-way conference call.

## HOLD

Press to place a call on hold.

## REDIAL

Press to dial the last number dialed when the telephone is off hook.

When the telephone is idle, press to display the last five numbers dialed. You can choose to dial a displayed number.

## FLASH

During a call, press to answer an incoming call when you receive a call waiting alert.

## PAUSE

Press to insert a two-second dialing pause in a number stored in the speed dial memory or directory.

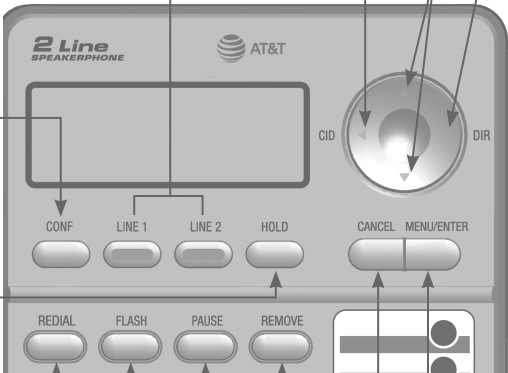
## ▼/▲

While in a menu, press to scroll up or down.

## ►/DIR

Press to enter the directory when the telephone is idle.

When entering numbers or names, press to move the cursor to the right.



## MENU/ENTER

Press to enter the main menu.

While in a menu, press to choose an item, or save an entry or setting.

## CANCEL

Press to cancel an operation and go back to the previous menu.

Press and hold to return to idle mode.

## REMOVE

Press to delete the displayed directory, or call history entry.

While entering numbers or names, press to backspace and erase a digit or character.

# Quick reference guide

## Speed dial keys

Press to dial or review a stored speed dial number when the telephone is idle.

## VOL+

When the telephone is idle, press to increase the ringer volume for both lines.  
During a call, press to increase the listening volume.  
When a line is ringing, press to increase the ringer volume of that line temporarily.

## VOL-

While the telephone is not in use, press to decrease the ringer volume for both lines.  
During a call, press to decrease the listening volume.  
When a line is ringing, press to decrease the ringer volume of that line temporarily.

## HEADSET

Press to activate the headset when a corded headset is connected.

## MUTE

During a call, press to mute the microphone.



## SPEAKER

Press to turn the base speakerphone on or off.

## LOWER

Press to enter the lower locations of the speed dial keys.

## Basic operation


By default, the telephone is set to use line 1 for making calls. When you answer a call, the telephone automatically selects the ringing line.

### Making, answering or ending a call

#### To make a call with the speakerphone:


1. Press **SPEAKER**  to use the primary line.

**-OR-**

To override automatic line selection, press **SPEAKER** , then press **LINE 1** or **LINE 2**.

**-OR-**

If you choose **SPEAKERPHONE** in **Choose the preferred mode** (see user's manual), press **LINE 1** or **LINE 2** directly to activate the speakerphone.

2. Wait for a dial tone, then dial the telephone number. The screen displays the elapsed time as you talk (in hours, minutes and seconds).
3. Press **SPEAKER**  to hang up.

#### To make a call with the handset:

1. Lift the handset to use the primary line.

**-OR-**

Lift the handset, then press **LINE 1** or **LINE 2** to override automatic line selection.

2. Wait for a dial tone, then dial the number.
3. Place the handset on the telephone base to hang up.

#### To make a call with the corded headset:

Make sure the corded headset is connected to the telephone base.

1. Press **HEADSET** on the telephone base to use the primary line.

**-OR-**

Press **HEADSET**, then press **LINE 1** or **LINE 2** to override automatic line selection.

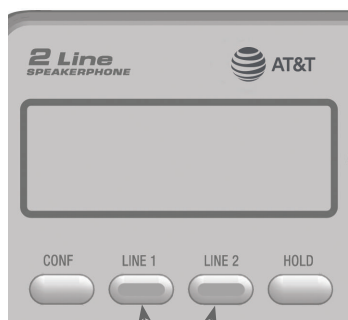
**-OR-**

If you chose **HEADSET** in **Choose the preferred mode** (see user's manual), press **LINE 1** or **LINE 2** directly to activate the headset.

2. Wait for a dial tone, then dial the number.
3. Press **HEADSET** to hang up.



Elapsed time



LINE buttons

# Basic operation

## To answer a call:

- Lift the handset, or press **SPEAKER**  or **HEADSET**.

**-OR-**

Press the **LINE** button of the ringing line to answer the call with the preferred mode.

## On hook dialing (predialing)

---


1. Use the dialing keys to enter a telephone number. Press **REMOVE** to make corrections when entering the telephone number.
2. Lift the handset, or press **SPEAKER**  or **HEADSET**.

**-OR-**

Press **LINE 1** or **LINE 2** to override automatic line selection and dial the number using your preferred mode.

## Clearspeak™ dial-in-base speakerphone

---

During a call using the handset, press **SPEAKER** , then hang up the handset. This allows you to use the telephone hands free and lets more people participate in the conversation.

## Switching between the handset, headset and speakerphone

---

### To switch from the handset to speakerphone:

While on a call using the handset, press **SPEAKER** , then hang up the handset.

### To switch from the handset to headset:

While on a call using the handset, press **HEADSET** (make sure a headset is firmly plugged in), then hang up the handset.

### To switch from the speakerphone to handset:

While on a call using the speakerphone, lift the handset.

### To switch from the speakerphone to headset:

While on a call using the speakerphone, press **HEADSET** (make sure a headset is firmly plugged in).

### To switch from the headset to speakerphone:

While on a call using the headset, press **SPEAKER** .

### To switch from the headset to handset:

While on a call using the headset, lift the handset.



**[www.telephones.att.com](http://www.telephones.att.com)**

Clearspeak™ is a trademark of Advanced American Telephones.

© 2011-2019 Advanced American Telephones. All Rights Reserved.

AT&T and the AT&T logo are trademarks of AT&T Intellectual Property licensed to  
Advanced American Telephones, San Antonio, TX 78219.

Printed in China. Issue 6.0 AT&T 03/19.