

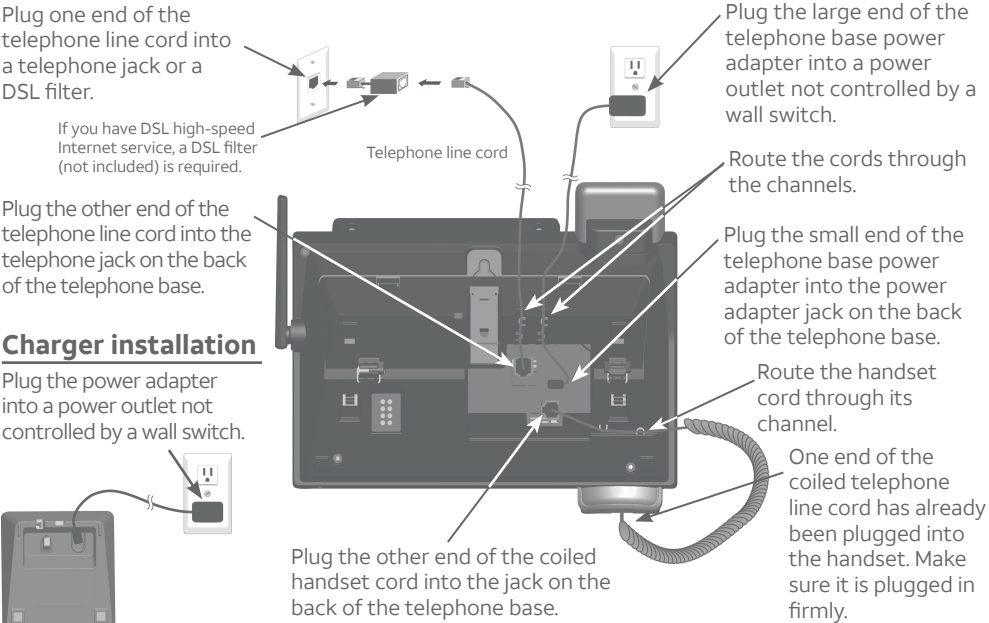


## Quick start guide

CL84115/CL84215/CL84265/CL84365

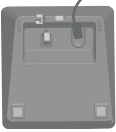
**This quick start guide provides you with basic instructions only. For more complete instructions, refer to your Abridged user's manual provided in the package, or see the online Complete user's manual at [www.telephones.att.com/manuals](http://www.telephones.att.com/manuals).**

### Telephone base installation



### Charger installation

Plug the power adapter into a power outlet not controlled by a wall switch.



**Caution:** Use only the power adapter provided with this product. To obtain a replacement, visit our website at [www.telephones.att.com](http://www.telephones.att.com) or call **1 (800) 222-3111**. In Canada, dial **1 (866) 288-4268**.

### Battery installation

Install the battery, as shown below. Charge your handset(s) before initial use. The battery is fully charged after 10 hours of continuous charging.

#### Step 1

Plug the battery connector securely into the socket inside the handset battery compartment. Insert the supplied battery with the label **THIS SIDE UP** facing up, as indicated.

#### Step 2

Align the cover flat against the battery compartment, then slide it upwards until it clicks into place.

#### Step 3

Charge the handset by placing it face forward in the handset charger. The **CHARGE** light on the top of the handset is on during charging.

**Caution:** Use only the supplied rechargeable battery or replacement battery (model BT183342/BT283342).

## Quick reference guide - cordless handset

### CHARGE indicator

On when the handset is charging in the charger.

### ▼CID/VOLUME

Press ▼CID to show caller ID log when the handset is not in use.

Press to scroll down while in menus.

While entering names or numbers, press to move the cursor to the left.

Press to decrease the listening volume when on a call, or to decrease the message playback volume.

### REDIAL/PAUSE

Press repeatedly to view the last 10 numbers dialed.

While entering numbers, press and hold to insert a dialing pause.

### PHONE/FLASH

Press to make or answer a call. During a call, press to answer an incoming call when you receive a call waiting alert.

During message playback, press to call back the caller if the caller's number is available.

### 1

While reviewing a caller ID log entry, press repeatedly to add or remove 1 in front of the telephone number before dialing or saving it.

Press and hold to set or dial your voicemail number.

### TONE X/a>A

Press to switch to tone dialing temporarily during a call if you have pulse service.

While entering names, press to change the next letter to upper or lower case.

### )/SPEAKER

Press to make or answer a call using the speakerphone.

Press to switch between the speakerphone and the handset.

### ▲DIR/VOLUME

Press ▲DIR to show directory entries when the handset is not in use.

Press to scroll up while in menus.

While entering names or numbers, press to move the cursor to the right.

Press to increase the listening volume when on a call, or to increase the message playback volume.

### MENU/SELECT

When the handset is not in use, press to show the menu.

While in the menu, press to select an item or save an entry or setting.

### /OFF/CANCEL

During a call, press to hang up.

While in a menu, press to cancel an operation, back up to the previous menu, or exit the menu display; or press and hold this button to exit to idle mode.

When the handset is ringing, press to mute the ringer temporarily.

Press and hold while the telephone is not in use to erase the missed call indicator.

### QUIET# (pound key)

Press repeatedly to display other dialing options when reviewing a caller ID log entry.

Press and hold to enter the **QUIET** mode setting screen, or to deactivate **QUIET** mode.

### EQ

During an outside call, intercom call, message or announcement playback, press to change the audio quality to best suit your hearing.

### MUTE/DELETE

During a call, press to mute the microphone.

When the handset is ringing, press to mute the ringer temporarily.

While reviewing the caller ID log, the directory or the redial memory, press to delete an individual entry.

While predialing, press to delete digits.

During message or announcement playback, press to delete the playing message or the recorded announcement.

### Cordless handset side view

### PUSH TO TALK

Press to initiate a one-to-one or one-to-group broadcast.

Press and hold to broadcast to a group of system devices.

## Quick reference guide - telephone base

### 1

Press and hold to set or to dial your voicemail number.

### IN USE indicator

On when the telephone is in use, or when the answering system is answering an incoming call.

On when a handset is being registered.

Flashes when there is an incoming call or when all handsets are being deregistered.

Flashes when another telephone is in use on the same line.

### Large tilt display



### VOL ▲/VOL ▼

During message playback or call screening, press to adjust the listening volume.

While in idle mode, press to adjust the base ringer volume.

When on a call, press to adjust the listening volume.

### INT

Press to initiate an intercom conversation or transfer a call.

### PTT/FLASH

Press to initiate a one-to-one or one-to-group broadcast.

Press and hold to broadcast to a group of system devices.

During a call, press to answer an incoming call when you receive a call waiting alert.

### MIC

Microphone.

**/HANDSET LOCATOR** While the telephone is idle, press to page all handsets.

### CANCEL

While in a menu, press to cancel an operation, back up to the previous menu or exit the menu display; or press and hold to go back to idle mode.

When the telephone base is ringing, press to mute the ringer temporarily.

When the telephone base is not in use, press and hold to erase the missed call indicator.

### ▼CID

Press to display the caller ID log when the telephone is not in use.

Press to scroll down while in menus and lists.

While entering names or numbers, press to move the cursor to the left.

### ▲DIR

Press to display the directory when the telephone is not in use.

Press to scroll up while in menus and lists.

While entering names or numbers, press to move the cursor to the right.

### MENU/SELECT

When the telephone base is not in use, press to show the menu.

While in the menu, press to confirm or save an entry or setting.

### REDIAL/PAUSE

Press repeatedly to view the last 10 numbers dialed.

While entering numbers, press and hold to insert a dialing pause.

### X/DELETE

While reviewing the caller ID log, the directory or the redial memory, press to delete an individual entry.

While predialing, press to delete digits.

During message or announcement playback, press to delete the playing message or announcement.

Press twice to delete all old messages when the telephone is not in use.

### ◀/REPEAT

During playback, press to repeat the playing message. During playback, press twice to play the previous message.

### ▶/SKIP

Press to skip a message.

### ●/RECORD

Press to record memo or record your own announcement.

### ⏻/ANS ON/OFF

Press to turn the built-in answering system on or off.

### ▶/PLAY/STOP

Press to start or stop message playback.

### MUTE

During a call, press to mute the microphone.

When the telephone is ringing, press to mute the ringer temporarily.

### )/SPEAKER

Press to make or answer a call using the speakerphone.

## Initial settings

**We recommend you program your telephone system before use.**

The following are a few examples of common features to set before using the telephone. Refer to the **Handset and telephone base settings** and **Answering system settings** in the Abridged user's manual or the online Complete user's manual for detailed instructions on setting all telephone features.

### Set date/time

Set the date/time before using the answering system.

**Using a cordless handset or the telephone base:**

1. **MENU** -> ▼ or ▲ -> **Set date/time** -> **SELECT**.
2. Enter the month, day and year using the dialing keys -> **SELECT**.
3. Enter the hour and minute using the dialing keys.
4. ▼ or ▲ to choose **AM** or **PM** -> **SELECT**.

### Basic answering system setup via voice guide

You can follow the voice guide to record your own announcement, set the number of rings, and set the message alert tone.

### Using the telephone base:

1. **MENU** -> ▼ or ▲ -> **Answering sys** -> **SELECT**.
2. ▼ or ▲ -> **Voice guide** -> **SELECT**.
3. Set up your answering system by inputting the designated numbers, as instructed.

### Record your own announcement

Your outgoing announcement plays when calls are answered by the answering system. You can use the preset announcement to answer calls, or replace it with your own recorded announcement.

**Using a cordless handset or the telephone base:**

1. **MENU** -> ▼ or ▲ -> **Answering sys** -> **SELECT**.
2. **SELECT** to select **Announcement**.
3. ▼ or ▲ -> **Record annc** -> **SELECT**.
4. After the tone, speak towards the handset or telephone base to record your announcement. Press **5** to end recording.

### -OR-

**Using the telephone base:**

1. ●/RECORD -> ▼ or ▲ -> **Announcement** -> **SELECT**.
2. After the tone, speak towards the handset or telephone base to record your announcement. Press **5** to end recording.

### Number of rings

You can set the answering system to answer an incoming call after two, three, four, five or six rings, or toll saver. If you choose toll saver, the answering system answers a call after two rings when you have new messages, or after four rings when there are no new messages. This enables you to check for new messages and avoid paying unnecessary long distance charges if you are calling from out of your local area.

If you want the built-in answering system instead of the voicemail to answer a call, you should set the answering system to answer a call at least two rings before the voicemail is set to answer. Contact your telephone service provider for information on your voicemail settings.

**Using a cordless handset or the telephone base:**

1. **MENU** -> ▼ or ▲ -> **Answering sys** -> **SELECT**.
2. ▼ or ▲ -> **Ans sys setup** -> **SELECT**.
3. ▼ or ▲ -> **# of rings** -> **SELECT**.
4. ▼ or ▲ -> Choose among **2, 3, 4, 5, 6** or **Toll saver** -> **SELECT**.

### Ringer volume

You can set the ringer volume level to one of the six levels or turn the ringer off.

**Using a cordless handset or the telephone base:**

1. **MENU** -> ▼ or ▲ -> **Ringers** -> **SELECT**.
2. **SELECT** to select **Ringer volume**.
3. ▼ or ▲ to choose the desired level -> **SELECT**.

Initial settings (continued)

|                                                                                                                                                                                                                                                                                                  |
|--------------------------------------------------------------------------------------------------------------------------------------------------------------------------------------------------------------------------------------------------------------------------------------------------|
| Reset language to English                                                                                                                                                                                                                                                                        |
| If you have accidentally changed the screen display language and want to switch it back to English, follow the step mentioned below.<br><b>Using a cordless handset or the telephone base:</b> <ul style="list-style-type: none"><li><b>MENU</b> in idle mode -&gt; enter <b>364#</b>.</li></ul> |

Telephone operation

| Operation                                                               | Steps                                                                                                                                                                                                                                                                                                        |
|-------------------------------------------------------------------------|--------------------------------------------------------------------------------------------------------------------------------------------------------------------------------------------------------------------------------------------------------------------------------------------------------------|
| Making a call                                                           | <b>Using a cordless handset:</b><br>Press <b>\PHONE</b> or <b>📞/SPEAKER</b> -> Enter the telephone number.<br><b>Using the telephone base:</b><br>Press <b>📞/SPEAKER</b> or lift the corded handset -> Enter the telephone number.                                                                           |
| Answering a call                                                        | <b>Using a cordless handset:</b><br>Press <b>\PHONE</b> or <b>📞/SPEAKER</b> , or press any dialing key ( <b>0-9</b> , <b>TONE ✕</b> or <b>#</b> ).<br><b>Using the telephone base:</b><br>Press <b>📞/SPEAKER</b> , or lift the corded handset.                                                               |
| Ending a call                                                           | <b>Using a cordless handset:</b><br>Press <b>📞/OFF</b> or return the handset to the charger.<br><b>Using the telephone base:</b><br>Press <b>📞/SPEAKER</b> or hang up the corded handset.                                                                                                                    |
| Handset speakerphone                                                    | During a call, press <b>📞/SPEAKER</b> to switch between handsfree speakerphone and normal handset use.                                                                                                                                                                                                       |
| Redial                                                                  | <b>Using a cordless handset:</b><br>Press <b>REDIAL</b> repeatedly to select the desired entry -> <b>\PHONE</b> or <b>📞/SPEAKER</b> to call.<br><b>Using the telephone base:</b><br>Press <b>REDIAL</b> repeatedly to select the desired entry -> press <b>📞/SPEAKER</b> or lift the corded handset to call. |
| Volume control                                                          | On the telephone base, press <b>VOL ▼</b> to decrease or press <b>VOL ▲</b> to increase the listening volume during a call. On a cordless handset, press <b>▼</b> or <b>▲</b> .                                                                                                                              |
| Call waiting<br>(Requires subscription from telephone service provider) | Press <b>\FLASH</b> on the handset or <b>PTT/FLASH</b> on the telephone base to put current call on hold and to take the new call; press again to switch back and forth between calls.                                                                                                                       |

Caller ID

This product supports caller ID services offered by most telephone service providers. The telephone stores caller ID information of the last 50 incoming calls in the telephone base. This information is common to all devices.

| Missed call indicator                                                                                                                                                                                                                                                                                                                                                                                                                                                                                                                                                                                                                                                                                                                                                                                                                                                                                                                     |
|-------------------------------------------------------------------------------------------------------------------------------------------------------------------------------------------------------------------------------------------------------------------------------------------------------------------------------------------------------------------------------------------------------------------------------------------------------------------------------------------------------------------------------------------------------------------------------------------------------------------------------------------------------------------------------------------------------------------------------------------------------------------------------------------------------------------------------------------------------------------------------------------------------------------------------------------|
| When a handset or the telephone base is in idle mode and has new or missed calls, its screen shows <b>XX Missed calls</b> .<br>You can erase the missed call indicator either by reviewing the call log one by one, or by <b>pressing and holding</b> <b>📞/CANCEL</b> on the handset or <b>CANCEL</b> on the telephone base in idle mode.                                                                                                                                                                                                                                                                                                                                                                                                                                                                                                                                                                                                 |
| Review and dial a number in the call log                                                                                                                                                                                                                                                                                                                                                                                                                                                                                                                                                                                                                                                                                                                                                                                                                                                                                                  |
| 1. <b>CID</b> in idle mode -> <b>▼</b> or <b>▲</b> to scroll through the list.<br>2. When the desired entry is displayed, press <b>\PHONE</b> or <b>📞/SPEAKER</b> on the cordless handset to call. On the telephone base, lift the corded handset or press <b>📞/SPEAKER</b> to call.                                                                                                                                                                                                                                                                                                                                                                                                                                                                                                                                                                                                                                                      |
| Caller ID announce                                                                                                                                                                                                                                                                                                                                                                                                                                                                                                                                                                                                                                                                                                                                                                                                                                                                                                                        |
| When this feature is on and you have an incoming call, the handset and/or base speaks <i>“Call from...”</i> and the name of the caller based on the directory or caller ID information. You can turn this feature off for the base or each individual handset, or for all devices.<br>1. <b>MENU</b> -> <b>▼</b> or <b>▲</b> -> <b>Settings</b> -> <b>SELECT</b> .<br>2. <b>▼</b> or <b>▲</b> -> <b>Caller ID annnc</b> -> <b>SELECT</b> .<br>3. <b>▼</b> or <b>▲</b> to choose the desired option, then press <b>MENU/SELECT</b> . <ul style="list-style-type: none"><li><b>Set all On/Off</b> - Change the setting for the base and all handsets.</li><li><b>Local handset</b> - Change the setting for that handset only (when programming from a cordless handset only).</li><li><b>Base</b> - Change the setting for the telephone base only.</li></ul> 4. <b>▼</b> or <b>▲</b> to choose <b>On</b> or <b>Off</b> -> <b>SELECT</b> . |

Call block

If you have subscribed to caller ID service, you can use the call block feature to reject certain calls automatically. The call block list can store up to 20 entries. This feature is only available on the telephone base.

| Operation                     | Steps                                                                                                                                                                                                                                                                                                                              |
|-------------------------------|------------------------------------------------------------------------------------------------------------------------------------------------------------------------------------------------------------------------------------------------------------------------------------------------------------------------------------|
| Adding a call block entry     | 1. <b>MENU</b> -> <b>▼</b> or <b>▲</b> -> <b>Call block</b> -> <b>SELECT</b> .<br>2. <b>SELECT</b> to select <b>Block list</b> .<br>3. <b>▼</b> or <b>▲</b> -> <b>Add new entry</b> -> <b>SELECT</b> .<br>4. Enter a telephone number up to 30 digits -> <b>SELECT</b> .<br>5. Enter a name up to 15 characters -> <b>SELECT</b> . |
| Blocking calls without number | 1. <b>MENU</b> -> <b>▼</b> or <b>▲</b> -> <b>Call block</b> -> <b>SELECT</b> .<br>2. <b>▼</b> or <b>▲</b> -> <b>Calls w/o num</b> -> <b>SELECT</b> .<br>3. <b>▼</b> or <b>▲</b> to choose <b>Not block</b> or <b>Block</b> -> <b>SELECT</b> .                                                                                      |

Directory

The directory can store up to 50 entries, which are shared by all system devices.

| Operation                      | Steps                                                                                                                                                                                                                                                                                                                                  |
|--------------------------------|----------------------------------------------------------------------------------------------------------------------------------------------------------------------------------------------------------------------------------------------------------------------------------------------------------------------------------------|
| Adding an entry                | 1. <b>MENU</b> .<br>2. <b>▼</b> or <b>▲</b> -> <b>Directory</b> -> <b>SELECT</b> .<br>3. <b>▼</b> or <b>▲</b> -> <b>Add contact</b> -> <b>SELECT</b> .<br>4. Enter a telephone number up to 30 digits -> <b>SELECT</b> .<br>5. Enter a name up to 15 characters -> <b>SELECT</b> .                                                     |
| Searching/<br>dialing an entry | 1. <b>DIR</b> in idle mode.<br>2. Press <b>▼</b> or <b>▲</b> to browse through the directory, or press the dialing keys ( <b>0-9</b> ) to start a name search.<br>3. Press <b>\PHONE</b> or <b>📞/SPEAKER</b> on a handset to call.<br><b>-OR-</b><br>On the telephone base, press <b>📞/SPEAKER</b> or lift the corded handset to call. |

Answering system

| About answering system and voicemail                                                                                                                                                                                                                                                                                                                                                                                                                                                                                                                                                                                                                                                                                                                             |
|------------------------------------------------------------------------------------------------------------------------------------------------------------------------------------------------------------------------------------------------------------------------------------------------------------------------------------------------------------------------------------------------------------------------------------------------------------------------------------------------------------------------------------------------------------------------------------------------------------------------------------------------------------------------------------------------------------------------------------------------------------------|
| Your telephone has separate indicators for two different types of voice messages: those left on the built-in answering system and those left at your telephone service provider’s voicemail. To listen to messages recorded on the built-in answering system, refer to the <b>Message playback</b> section; to listen to voicemail, contact your telephone service provider for more information.                                                                                                                                                                                                                                                                                                                                                                |
| Turn answering system on/off                                                                                                                                                                                                                                                                                                                                                                                                                                                                                                                                                                                                                                                                                                                                     |
| The answering system must be turned on to answer and record messages.<br><b>Using a cordless handset:</b><br>1. <b>MENU</b> .<br>2. <b>▼</b> or <b>▲</b> -> <b>Answering sys</b> --> <b>SELECT</b> .<br>3. <b>▼</b> or <b>▲</b> -> <b>Answer ON/OFF</b> --> <b>SELECT</b> .<br>4. <b>▼</b> or <b>▲</b> -> <b>On</b> or <b>Off</b> --> <b>SELECT</b> .<br>When the answering system is on, the handset shows <b>ANS ON</b> .<br><b>Using the telephone base:</b> <ul style="list-style-type: none"><li>Press <b>📞/ANS ON/OFF</b> to turn the answering system on or off. If the answering system is turned on, it announces, <i>“Calls will be answered.”</i> If the answering system is turned off, it announces, <i>“Calls will not be answered.”</i></li></ul> |
| Message alert tone                                                                                                                                                                                                                                                                                                                                                                                                                                                                                                                                                                                                                                                                                                                                               |
| When this feature is on, and there is at least one new message, the telephone base beeps every 10 seconds.<br><b>Using a cordless handset or the telephone base:</b><br>1. <b>MENU</b> -> <b>▼</b> or <b>▲</b> -> <b>Answering sys</b> -> <b>SELECT</b> .<br>2. <b>▼</b> or <b>▲</b> -> <b>Ans sys setup</b> -> <b>SELECT</b> .<br>3. <b>▼</b> or <b>▲</b> -> <b>Msg alert tone</b> -> <b>SELECT</b> .<br>4. <b>▼</b> or <b>▲</b> -> <b>On</b> or <b>Off</b> -> <b>SELECT</b> .                                                                                                                                                                                                                                                                                  |
| Call screening                                                                                                                                                                                                                                                                                                                                                                                                                                                                                                                                                                                                                                                                                                                                                   |
| Use this feature to choose whether incoming messages can be heard over at telephone base when they are being recorded. If you turn call screening on, you hear the incoming message. While monitoring an incoming message, you can answer the call by pressing <b>\PHONE</b> on the handset, or pressing <b>📞/SPEAKER</b> or lifting the corded handset on the telephone base.<br><b>Using a cordless handset or the telephone base:</b><br>1. <b>MENU</b> -> <b>▼</b> or <b>▲</b> -> <b>Answering sys</b> -> <b>SELECT</b> .<br>2. <b>▼</b> or <b>▲</b> -> <b>Ans sys setup</b> -> <b>SELECT</b> .<br>3. <b>SELECT</b> to select <b>Call screening</b> .<br>4. <b>▼</b> or <b>▲</b> -> choose <b>On</b> or <b>Off</b> -> <b>SELECT</b> .                        |

Answering system (continued)

Message playback

**Using the telephone base:**  
 Press ►/■/PLAY when the telephone base is in idle mode. If there are only new or only old messages, they are played automatically. If there are both old and new messages, press ▼ or ▲ -> **Play new msgs** or **Play old msgs** -> **SELECT**.

**Using a cordless handset:**  
 Press **MENU** twice when the handset is in idle mode. If there are only new or only old messages, they are played automatically. If there are both old and new messages, press ▼ or ▲ -> **Play new msgs** or **Play old msgs** -> **SELECT**.

**Options during playback**

| Feature                   | On the telephone base              | On a handset                           |
|---------------------------|------------------------------------|----------------------------------------|
| Adjust playback volume    | Press <b>VOL ▼</b> or <b>VOL ▲</b> | Press <b>▼VOLUME</b> or <b>▲VOLUME</b> |
| Stop playback             | Press ►/■/STOP                     | Press <b>5</b>                         |
| Skip to the next message  | Press ►►/SKIP                      | Press <b>6</b>                         |
| Repeat the message        | Press ◀◀/REPEAT                    | Press <b>4</b>                         |
| Play the previous message | Press ◀◀/REPEAT twice              | Press <b>4</b> twice                   |
| Delete the message        | Press <b>X/DELETE</b>              | Press <b>DELETE</b>                    |

For more detailed instructions, please refer to the Abridged user’s manual provided in your package, or for a full set of installation and operation instructions, refer to the online **CL84115/CL84215/CL84265/CL84365 DECT 6.0 corded/cordless telephone/answering system with caller ID/call waiting** Complete user’s manual at **www.telephones.att.com/manuals**.

For customer service or product information, visit our website at **www.telephones.att.com** or call **1 (800) 222-3111**. In Canada, dial **1 (866) 288-4268**.