



Quick start guide

CL83215/CL83315/CL83365/CL83415/CL83465/CL83565

This quick start guide provides you with basic instructions only. For more complete instructions, refer to your Abridged user's manual provided in the package, or see the online Complete user's manual at www.telephones.att.com/manuals.

Telephone base installation

Plug the large end of the telephone base power adapter into a power outlet not controlled by a wall switch.

Plug one end of the telephone line cord into a telephone jack or a DSL filter.

If you have DSL high-speed Internet service, a DSL filter (not included) is required.

Route the power adapter cord through this slot.

Raise the antenna.

Plug the small end of the telephone base power adapter into the power adapter jack on the back of the telephone base.

Route the telephone line cord through this slot.

Plug the other end of the telephone line cord into the telephone jack on the back of the telephone base.

Caution: Use only the power adapter(s) provided with this product. To obtain a replacement, visit our website at www.telephones.att.com or call **1 (800) 222-3111**. In Canada, dial **1 (866) 288-4268**.

Battery installation

Install the battery, as shown below. Charge your handset(s) before initial use. The battery is fully charged after ten hours of continuous charging.

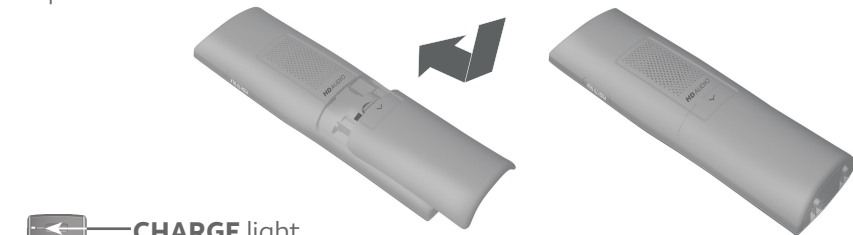
Step 1

Plug the battery connector securely into the socket inside the handset battery compartment. Insert the supplied battery with the label **THIS SIDE UP** facing up, as indicated.

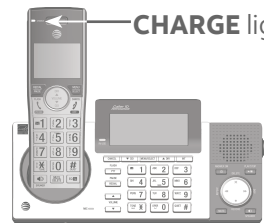


Step 2

Align the cover flat against the battery compartment, then slide it upwards until it clicks into place.



CHARGE light



Step 3

Charge the handset by placing it face forward in the telephone base or charger. The **CHARGE** light on the handset is on during charging.

Caution: Use only the supplied rechargeable battery or replacement battery (model BT183342/BT283342).

Quick reference guide - handset

CHARGE light

On when the handset is charging in the telephone base or charger.

▼CID/VOLUME

- Press ▼**CID** to show caller ID log when the handset is not in use.
- Press to scroll down while in menus.
- Press to decrease the listening volume when on a call.

REDIAL/PAUSE

- Press repeatedly to view the last ten numbers dialed.
- While entering numbers, press and hold to insert a dialing pause.

FLASH/PHONE

Press to make or answer a call.



Press and hold to set or dial your voicemail number.

TONEX/a>A

- Press to switch to tone dialing temporarily during a call if you have pulse service.
- While entering names, press to change the next letter to upper or lower case.

🔊/SPEAKER

Press to make or answer a call using the speakerphone.

▲DIR/VOLUME

- Press ▲**DIR** to show directory entries when the handset is not in use.
- Press to scroll up while in menus.
- Press to increase the listening volume when on a call.

MENU/SELECT

- When the handset is not in use, press to show the menu.
- While in the menu, press to select an item or save an entry or setting.

⏏/CANCEL/OFF

- During a call, press to hang up.
- While in a menu, press to cancel an operation, back up to the previous menu, or exit the menu display, or press and hold this button to exit to idle mode.

QUIET# (pound key)

Press and hold to enter the **QUIET** mode setting screen, or to deactivate **QUIET** mode.

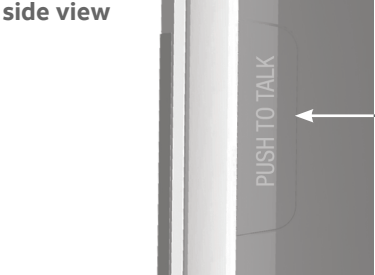


During an outside call, intercom call, message or announcement playback, press to change the audio quality to best suit your hearing.

MUTE/DELETE

- During a call, press to mute the microphone.
- Press to delete digit or character.

Handset side view



PUSH TO TALK

- Press to initiate a one-to-one or one-to-group broadcast.
- Press and hold to broadcast to a group of system devices.

Quick reference guide - telephone base

CANCEL

- While in a menu, press to cancel an operation, back up to the previous menu or exit the menu display; or press and hold to go back to idle mode.
- When the telephone base is ringing, press to mute the ringer temporarily.
- When the telephone base is not in use, press and hold to erase the missed call indicator.

▼CID

- Press to display the caller ID log when the phone is not in use.
- Press to scroll down while in menus and lists.
- While entering names or numbers, press to move the cursor to the left.

MENU/SELECT

- When the telephone base is not in use, press to show the menu.
- While in the menu, press to confirm or save an entry or setting.

▲DIR

- Press to display the directory when the phone is not in use.
- Press to scroll up while in menus and lists.
- While entering names or numbers, press to move the cursor to the right.

INT

Press to initiate an intercom conversation or transfer a call.

IN USE light

- On when the telephone is in use, or when the answering system is answering an incoming call.
- On when a handset is being registered.
- Flashes when there is an incoming call or when all handsets are being deregistered.
- Flashes when another telephone is in use on the same line.

📶/HANDSET LOCATOR

While the phone is idle, press to page all handsets.

PTT/FLASH

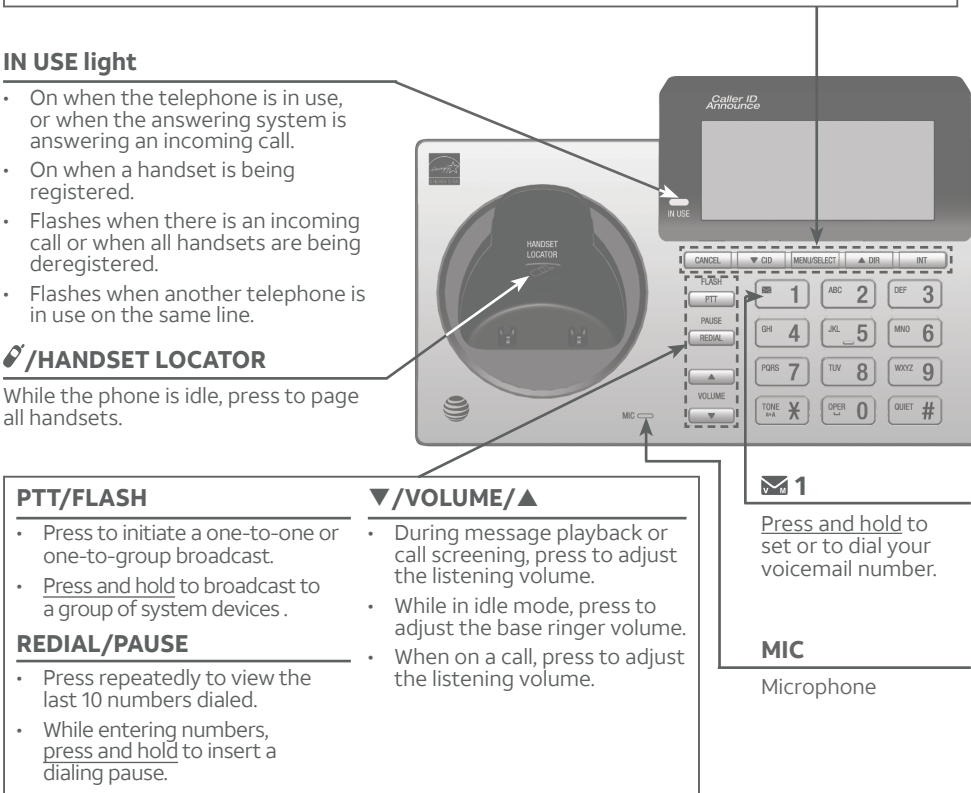
- Press to initiate a one-to-one or one-to-group broadcast.
- Press and hold to broadcast to a group of system devices.

REDIAL/PAUSE

- Press repeatedly to view the last 10 numbers dialed.
- While entering numbers, press and hold to insert a dialing pause.

▼/VOLUME/▲

- During message playback or call screening, press to adjust the listening volume.
- While in idle mode, press to adjust the base ringer volume.
- When on a call, press to adjust the listening volume.



•/RECORD
Press to record a memo or an announcement.
⏮/REPEAT
<ul style="list-style-type: none">During playback, press to repeat the playing message.During playback, press twice to play the previous message.
⏭/SKIP
Press to skip a message.
▶/PLAY/STOP
Press to start or stop message playback.
X/DELETE
<ul style="list-style-type: none">While reviewing the caller ID log, the directory or the redial memory, press to delete an individual entry.Press to delete digit or character.
🔇/ANSWER ON
Press to turn the built-in answering system on or off.
MUTE
<ul style="list-style-type: none">During a call, press to mute the microphone.When the phone is ringing, press to mute the ringer temporarily.
🔊/SPEAKER
Press to make or answer a call using the speakerphone.

Initial settings

We recommend you program your telephone system before use. The following are a few examples of common features to set before using the telephone. Refer to the **Handset settings**, **Telephone base settings** and **Answering system settings** in the Abridged user's manual or the online Complete user's manual for detailed instructions on setting all telephone features.

Set date/time

Set the date/time before using the answering system.

Using a cordless handset or the telephone base:

- MENU** -> ▼ or ▲ -> **Set date/time** -> **SELECT**.
- Enter the month, day and year using the dialing keys -> **SELECT**.
- Enter the hour and minute using the dialing keys.
- ▼ or ▲ to choose **AM** or **PM** -> **SELECT**.

Basic answering system setup via voice guide

You can follow the voice guide to record your own announcement, set the number of rings and set the message alert tone.

Using the telephone base:

- MENU** -> ▼ or ▲ -> **Answering sys** -> **SELECT**.
- ▼ or ▲ -> **Voice guide** -> **SELECT**.
- Set up the answering system by inputting the designated numbers, as instructed.

Record your own announcement

Your outgoing announcement plays when calls are answered by the answering system. You can use the preset announcement to answer calls, or replace it with your own recorded announcement.

Using a cordless handset:

- MENU** -> ▼ or ▲ -> **Answering sys** -> **SELECT**.
- SELECT** to select **Announcement**.
- SELECT** to select **Record annnc**.
- Facing the handset, record your announcement and press **5** to end recording.

Using the telephone base:

- /RECORD -> ▼ or ▲ -> **Announcement** -> **SELECT**.
- Speak towards the telephone base to record your announcement and press **5** to end recording.

Number of rings

You can set the answering system to answer an incoming call after two, three, four, five or six rings, or toll saver. If you choose toll saver, the answering system answers a call after two rings if you have new messages, or after four rings when there are no new messages. This enables you to check for new messages and avoid paying unnecessary long distance charges if you are calling from out of your local area.

If you want the built-in answering system instead of the voicemail to answer a call, you should set the answering system to answer a call at least two rings before the voicemail is set to answer. Contact your telephone service provider for information on your voicemail settings.

Using a cordless handset or the telephone base:

- MENU** -> ▼ or ▲ -> **Answering sys** -> **SELECT**.
- ▼ or ▲ -> **Ans sys setup** -> **SELECT**.
- ▼ or ▲ -> **# of rings** -> **SELECT**.
- ▼ or ▲ to choose among **2, 3, 4, 5, 6** or **Toll saver** -> **SELECT**.

Ringer volume

You can set the ringer volume level to one of the six levels or turn the ringer off.

Using a cordless handset or the telephone base:

- MENU** -> ▼ or ▲ -> **Ringers** -> **SELECT**.
- SELECT** to select **Ringer volume**.
- ▼ or ▲ to choose the desired level -> **SELECT**.

Reset language to English

If you have accidentally changed the screen display language and want to switch it back to English, follow the step mentioned below.

- MENU** in idle mode -> enter **364#**.

