



Quick start guide

TL96276/TL96456

This quick start guide provides you with basic instructions only. For more complete instructions, refer to the Abridged user's manual provided in the package, or see the Complete user's manual at www.telephones.att.com/manuals.

Parts checklist

Your package contains:

- Cordless handset (2 for TL96276) (4 for TL96456)
- Charger with power adapter (1 for TL96276) (3 for TL96456)
- Telephone base
- Telephone line cord
- Telephone base power adapter
- Battery compartment cover (2 for TL96276) (4 for TL96456)
- Battery (2 for TL96276) (4 for TL96456)
- Wall-mount bracket
- Abridged user's manual
- Quick start guide

Basic steps to set up & operate your phone

Basic installation

- 1 Install telephone base & charger
- 2 Install handset battery
- 3 Install telephone base on the wall (optional)

Common settings

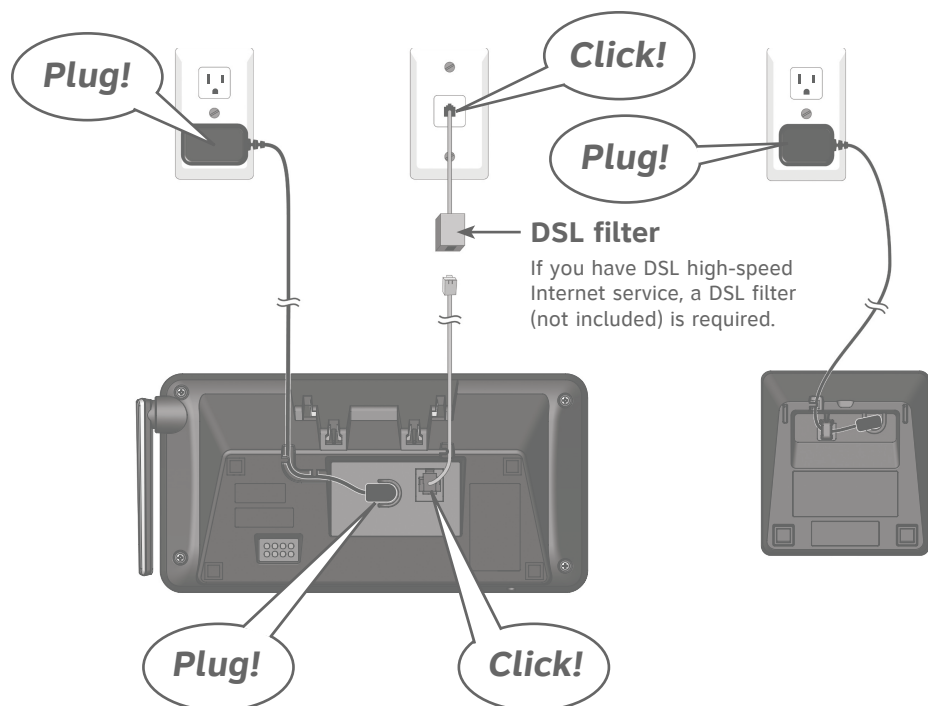
- 4 Set date and time
- 5 Basic answering system setup via voice guide
- 6 Set ringer volume
- 7 Add a Bluetooth® cell phone / headset
- 8 Record own announcement
- 9 Set number of rings

Operations

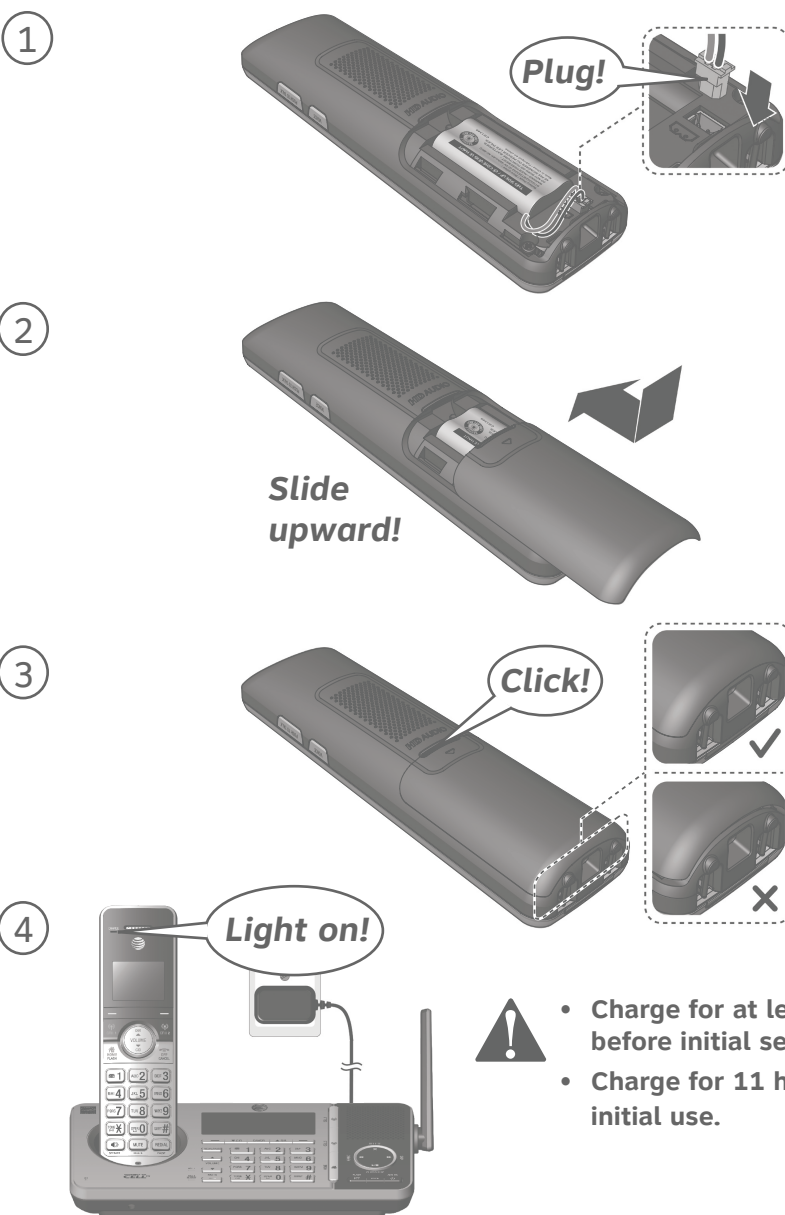
- 10 Directory
- 11 Caller ID
- 12 Call block
- 13 Download a cell phone directory
- 14 Remote voice control

The Bluetooth® word mark and logos are owned by Bluetooth SIG, Inc. and any use of such marks by Advanced American Telephones and its parent, VTech Holdings Limited, is under license. VTech Holdings Limited is a member of Bluetooth SIG, Inc. Other trademarks and trade names are those of their respective owners.

1 Install telephone base & charger

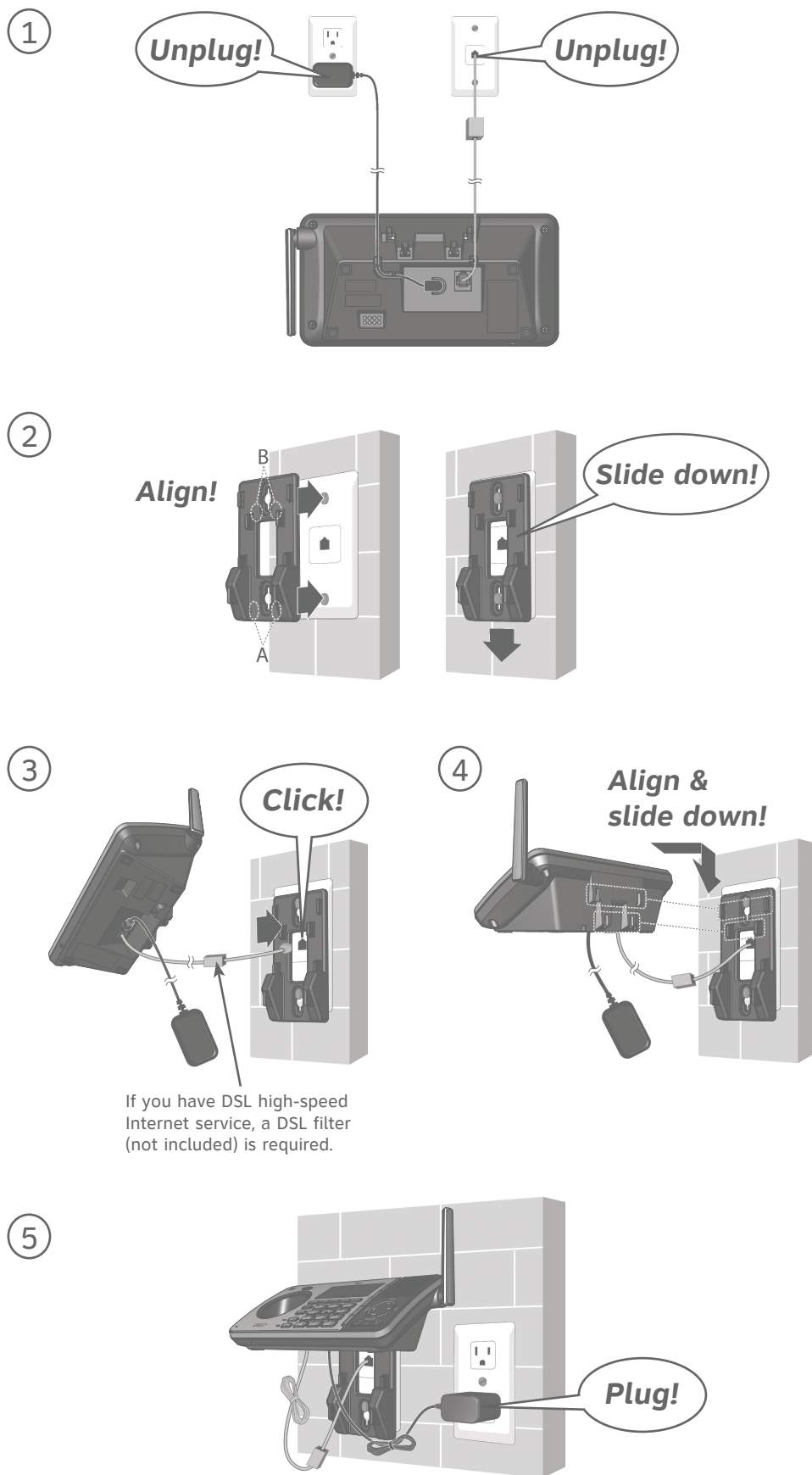


2 Install handset battery



3 Install telephone base on the wall (optional)

Refer to the following instructions only if you would like to mount the telephone on a wall.



INSTALLATION COMPLETED!
Keep reading for common settings and operations.

4 Set date and time

Set the date/time before using the answering system.

1. Press **MENU** -> Press **▼CID/▲DIR** to **Set date/time** -> Press **SELECT**.
2. Enter the month (**MM**), day (**DD**) and year (**YY**) -> Press **NEXT**.
3. Enter the hour (**HH**) and minute (**MM**).
4. Press **▼CID/▲DIR** to choose **AM** or **PM** -> Press **SAVE**.

5 Basic answering system setup via voice guide

You can follow the voice guide to record your own announcement, set the number of rings, and set the message alert tone.

1. Press **MENU** -> Press **▼CID/▲DIR** to **Answering sys** -> Press **SELECT**.
2. Press **▼CID/▲DIR** to **Voice guide** -> Press **SELECT**.
3. Set up your answering system by inputting designated numbers, as instructed in the voice guide.

6 Set ringer volume

You can set the ringer volume level to one of the six levels or turn the ringer off.

1. Press **MENU** -> Press **▼CID/▲DIR** to **Ringers** -> Press **SELECT**.
2. Press **SELECT** to select **Ringer volume**.
3. Press **▼CID/▲DIR** to choose the desired level -> Press **SET**.

7 Add a Bluetooth cell phone / headset

To use a Bluetooth enabled cellular phone or headset with your telephone, you must first pair and connect your Bluetooth cellular phone or headset with the telephone base.

Bluetooth wireless technology operates within a short range (up to 30 feet). Keep the connected device within 15 feet of the telephone base for optimal performance.

To pair and connect a cell phone using the telephone base:

1. Press **MENU** -> Press **▼CID/▲DIR** to **Bluetooth** -> Press **SELECT**.
2. Press **SELECT** to select **Add device**.
3. Press **SELECT** to select **Add cellular**.
4. Disconnect the cell phone from any Bluetooth device -> Press **NEXT**.
5. Place the cell phone next to the telephone base.
6. Press **NEXT** to turn on the telephone base discoverable mode.
7. Turn on the Bluetooth feature of your cell phone and search for or add new devices. Once your cell phone finds your AT&T phone (**AT&T DECT 6.0**), press the appropriate key on your cell phone to continue the pairing process.
 - Enter the cell phone passcode (typically **0000**), if required -> Press **SET**.
 - Enter the PIN (default PIN: **0000**) of the telephone base into your cell phone, if required.

7 Add a Bluetooth cell phone / headset (Continued)

To pair and connect a headset using the telephone base:

1. Press **MENU** -> Press **▼CID/▲DIR** to **Bluetooth** -> Press **SELECT**.
2. Press **SELECT** to select **Add device**.
3. Press **▼CID/▲DIR** to **Add headset** -> Press **SELECT**.
4. Disconnect your headset from any Bluetooth device -> Press **NEXT**.
5. Set your headset to discoverable mode -> Press **NEXT**.
6. Press **▼CID/▲DIR** to choose your headset, if required -> Press **SELECT**.
 - Enter the PIN (typically **0000**) of your headset, if required -> Press **NEXT**.

8 Record own announcement

You can use the preset announcement to answer calls, or replace it with your own recorded announcement.

1. Press **MENU** -> Press **▼CID/▲DIR** to **Answering sys** -> Press **SELECT**.
2. Press **SELECT** to select **Announcement**.
3. Press **SELECT** to select **Record annnc**.
4. Speak toward your handset or telephone base to record your announcement.
5. Press **STOP** to end recording and save the announcement.

9 Set number of rings

You can set the answering system to answer an incoming call after 2, 3, 4, 5 or 6 rings, or you can select toll saver. If you choose toll saver, the answering system answers a call after two rings when you have new messages, or after four rings when there are no new messages. Toll saver enables you to check for new messages and avoid paying unnecessary long distance charges if you are calling from out of your local area.

1. Press **MENU** -> Press **▼CID/▲DIR** to **Answering sys** -> Press **SELECT**.
2. Press **▼CID/▲DIR** to **Ans sys setup** -> Press **SELECT**.
3. Press **▼CID/▲DIR** to **# of rings** -> Press **SELECT**.
4. Press **▼CID/▲DIR** to choose among **6, 5, 4, 3, 2** or **Toll saver** -> Press **SELECT**.

SETUP DONE!
Keep reading for some operations.

10 Directory

The home directory stores up to 200 entries.

To add an entry in the home directory:

1. Press **MENU** -> Press **▼CID/▲DIR** to **Directory** -> **SELECT**.
2. Press **OPTION** to select **Home**.
3. Press **SELECT** to select **Add contact**.
4. Enter a telephone number -> Press **NEXT**.
5. Press **▼CID/▲DIR** to select **Home, Cell, Work** or **Other** -> Press **NEXT**.
6. Enter a name -> Press **SAVE**.



To review and dial a directory entry:

1. Press **DIR** in idle mode -> Press **▼CID/▲DIR** to select the desired directory -> Press **REVIEW**.
 2. Press **▼CID/▲DIR** to browse through the directory, or press the dialing keys to start a name search.
 3. Press **HOME** or **)/SPEAKER** on the handset, or press **HOME** on the telephone base to call using the home line.
- OR-**
- Press **CELL 1** or **CELL 2** to call using the cell line.



11 Caller ID

The caller ID log stores up to 50 entries.

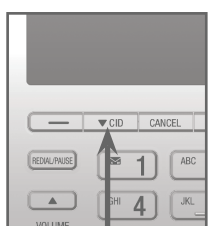
To review and dial a caller ID entry:

1. Press **CID** in idle mode -> Press **▼CID/▲DIR** to browse through the list.
 2. Press **HOME** or **)/SPEAKER** on the handset, or press **HOME** on the telephone base to dial with the home line.
- OR-**
- Press **CELL 1** or **CELL 2** to dial with the cell line.



To erase the missed call indicator:

The screens display **XX Missed calls** when you have incoming calls that have not been answered. When you have reviewed a new caller ID log entry, the missed call indicator is erased. When there is a new unanswered call, the missed calls indicator displays again.



If you want to erase the missed call indicator without reviewing the caller ID log, **press and hold** **↵CANCEL** on the handset or **CANCEL** on the telephone base in idle mode.

12 Call block

If you have subscribed to caller ID service, you can use the call block feature to reject certain calls automatically. The call block list stores up to 20 entries.

To add a call block entry:

1. Press **MENU** -> Press **▼CID/▲DIR** to **Call block** -> **SELECT**.
2. Press **SELECT** to select **Block list**.
3. Press **▼CID/▲DIR** to **Add new entry** -> **SELECT**.
4. Enter a telephone number -> Press **NEXT**.
5. Enter a name -> Press **SAVE**.

To block calls without number:

1. Press **MENU** -> Press **▼CID/▲DIR** to **Call block** -> **SELECT**.
2. Press **▼CID/▲DIR** to **Calls w/o num** -> **SELECT**.
3. Press **▼CID/▲DIR** to choose **Block** or **Not block** -> Press **SELECT**.

13 Download a cell phone directory

Before downloading a directory, make sure the cell phone is paired, active, and connected to your **TL96276/TL96456**.

To download a cell phone directory using the telephone base:

1. Press **MENU** -> Press **▼CID/▲DIR** to **Bluetooth** -> Press **SELECT**.
2. Press **▼CID/▲DIR** to **Download dir** -> Press **SELECT**.
 - Press **▼CID/▲DIR** to choose the desired cell phone, if necessary -> Press **SELECT**.
3. Press **▼CID/▲DIR** to choose among **Phone memory, SIM card only** or **Phone and SIM** -> Press **SELECT**.
4. Press **NEXT** to start downloading, if necessary.
 - Enter the cell phone passcode, if necessary -> Press **SET**.
 - Press a key on your cellphone to confirm the directory download, if required.
5. Press **OK** to exit.

If you are using Bluetooth-enabled cell phones with Android® OS 2.3 or above, you may also download the **Connect to Cell™** application (consists of **Caller ID manager** and **Alerts manager**) using the Google Play® Store app to extend the flexibility of your **TL96276/TL96456**. Scan the QR code on the right to download the application.



14 Remote voice control

If you have connected a cell phone to the telephone system, you can activate the voice-controlled application (voice app) of the cell phone, such as Siri®, Google Now™ or S Voice®, using the handset or telephone base.

Compatibility:

The remote voice control feature works with:

Voice-controlled application	Siri	Google Now	S Voice
Operation System (Versions supported)	iOS (8 or above)	Android (4 or above)	Android (4 or above)

Before using the remote voice control feature, make sure you checked the following:

- Your cell phone is paired and connected to your telephone system via Bluetooth.
- No Bluetooth applications are running in the background of your cell phone.
- Keep your cell phone within 15 feet of the telephone base.
- Do not lock up your cell phone's screen or set passcode for activating the voice app.
- Make sure you have turned on or logged in to the applications on your cell phone that you will be sending your voice commands, such as GPS, e-mail and social networking accounts.
- Your cell phone's data or Wi-Fi signal is in full strength and your cell phone can connect to the Internet.
- Try to activate the voice app on your cell phone to ensure it is in place.

To activate remote voice control:

1. Press **VOICE**.

-OR-

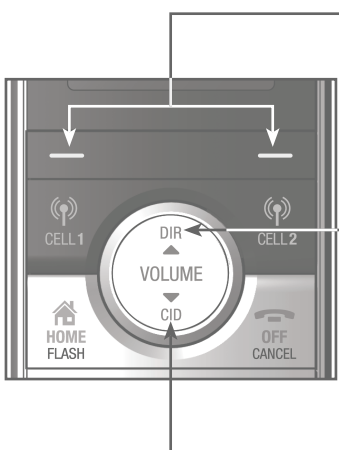
If you have two connected cell phones, press **VOICE** -> Press **CELL 1** or **CELL 2**.
2. When the telephone base or handset plays the confirmation tone, speak toward the telephone base or handset, and then wait for feedback. Make reply to the voice app's feedback, if necessary.
3. Press **VOICE** to exit.

NOTES:

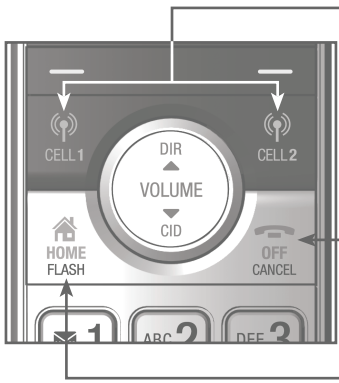
- Once you have activated the remote voice control feature, you are using your cell phone's voice app to operate your cell phone.
- Please check the cell phone user's manual and the voice app's help topics to find out what commands you can use and any limitations of the voice app.
- Some cell phone manufacturers or network carriers may customize the phone's operating system and implement their own voice app. If you want to use Google Now, you need to manually set it as your default voice app. For detailed instructions, refer to your cell phone user's manual, or contact your cell phone's manufacturer or network carrier. You may also go to "Google Product Forums" on the Internet and check the corresponding help topics.
- Due to the settings of certain cell phones and voice apps, your cell phone may not support the remote voice control feature. Contact your cell phone's manufacturer or network carrier, or check the voice app's help topics if you encounter any problems.
- During the remote voice control activation, if your Android cell phone comes with both a dedicated voice app and Google Now, it may prompt you to select which voice app to use, and whether use it for just once or always. Select the desired options. If you do not respond to your cell phone's prompt in time, the telephone displays **Connection timeout. Please check cell status..** Press **OK** and try again.
- If you need to press dialing keys (**0-9, TONE, QUIET#**) during a cell call, please make the call using the cell lines of your telephone system instead of using the voice app via the remote voice control feature.

Siri® is a registered trademark of Apple Inc.
Google Now™ is a trademark of Google Inc.
S Voice® is a registered mark of Samsung Electronics Co., Ltd.

Handset operation



- Show the menu.
- Select an item or save an entry or setting in a menu.
- Cancel an operation or back up to the previous menu.
- Review the directory.
- Scroll up while in menus.
- Increase the listening volume.
- While entering names and numbers, press to move the cursor to the right.
- Review the caller ID log.
- Scroll down while in menus.
- Decrease the listening volume.
- While entering names and numbers, press to move the cursor to the left.



- Make or answer a cell call.
- Answer an incoming CELL 1/CELL 2 call during a CELL 1/CELL 2 call.
- End a home or cell call.
- Cancel an operation or back up to the previous menu.
- Make or answer a home call.
- Answer a call waiting call during a home call.



- Mute a call.
- Delete a digit or character.
- Press and hold to set **QUIET** mode or to deactivate **QUIET** mode.
- Press repeatedly to review the redial list.
- Press and hold to add a dialing pause while dialing or entering a number.

- Make a home call using the speakerphone.
- Answer a home or cell call using the speakerphone.

Answering system operation

Your telephone has a built-in answering system and supports voicemail feature offered by your telephone service provider (subscription is required, and fees may apply).

Answering system and voicemail

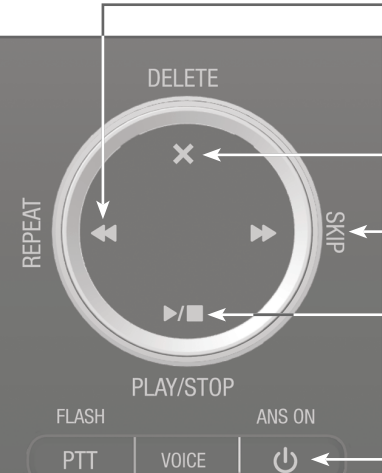
To use the built-in answering system:

Refer to this Quick start guide for basic instructions. For complete instructions, see the Abridged user's manual in the package or the Complete user's manual at www.telephones.att.com/manuals.

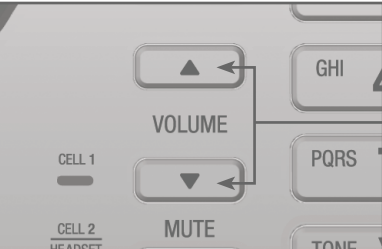
To use the voicemail:

Press and hold **✉1** to dial the preset voicemail number, and then enter a security code. Contact your telephone service provider for detailed information.

The built-in answering system must be turned on to answer and record messages.



- Repeat the playing message.
- Press twice to listen to the previous message.
- Delete the playing message.
- Skip to the next message.
- Start message playback.
- Stop message playback.
- Turn the answering system on or off.



- Adjust the speaker volume.

For more detailed instructions, refer to the Abridged user's manual provided in your package; or for a full set of installation and operation instructions, refer to the online **TL96276/TL96456 DECT 6.0 cordless telephone/answering system with BLUETOOTH® wireless technology**. Complete user's manual at www.telephones.att.com/manuals.

For customer service or product information, visit our website at www.telephones.att.com or call **1 (800) 222-3111**. In Canada, dial **1 (866) 288-4268**.

The *Bluetooth®* word mark and logos are owned by Bluetooth SIG, Inc. and any use of such marks by Advanced American Telephones and its parent, VTech Holdings Limited, is under license. VTech Holdings Limited is a member of Bluetooth SIG, Inc. Other trademarks and trade names are those of their respective owners.

© 2016 Advanced American Telephones. All Rights Reserved.
AT&T and the AT&T logo are trademarks of AT&T Intellectual Property licensed to Advanced American Telephones, San Antonio, TX 78219.
Android® and Google Play® are registered trademarks of Google Inc.
Connect to Cell™ is a trademark of Advanced American Telephones.
Google Now™ is a trademark of Google Inc.
S Voice® is a registered mark of Samsung Electronics Co., Ltd.
Siri® is a registered trademark of Apple Inc.
Printed in China. Issue 1.0 AT&T 04/16.