



*Quick Start Guide*

## **2.4 GHz Cordless Telephone/Answering System E2728B/EI I28B**

---

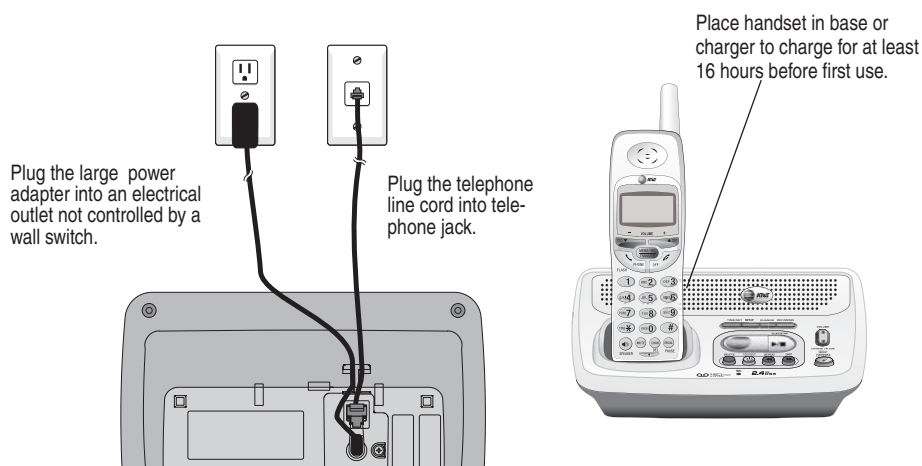
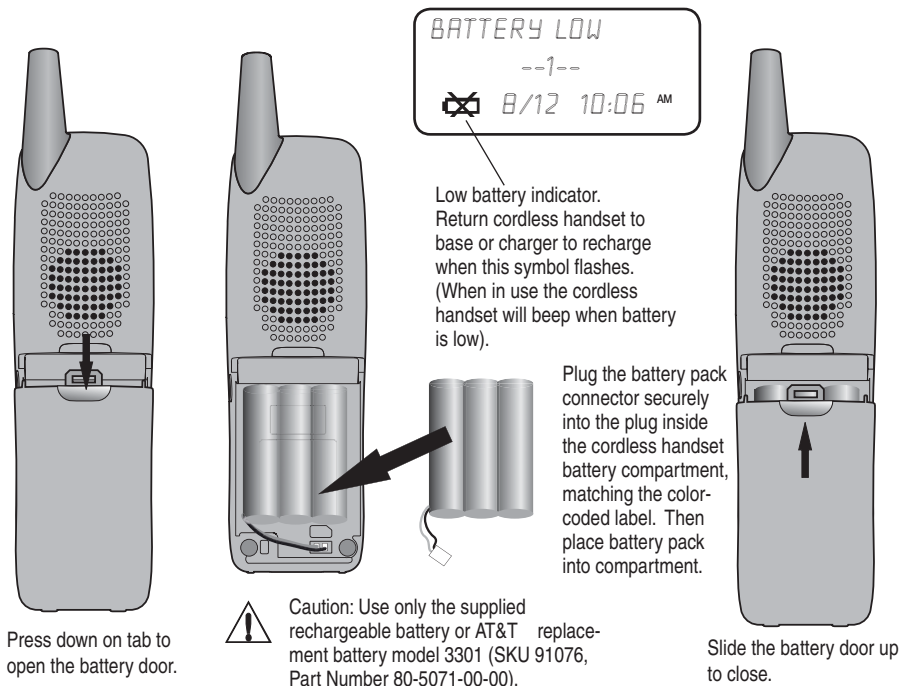
**with Caller ID & Call Waiting**

---



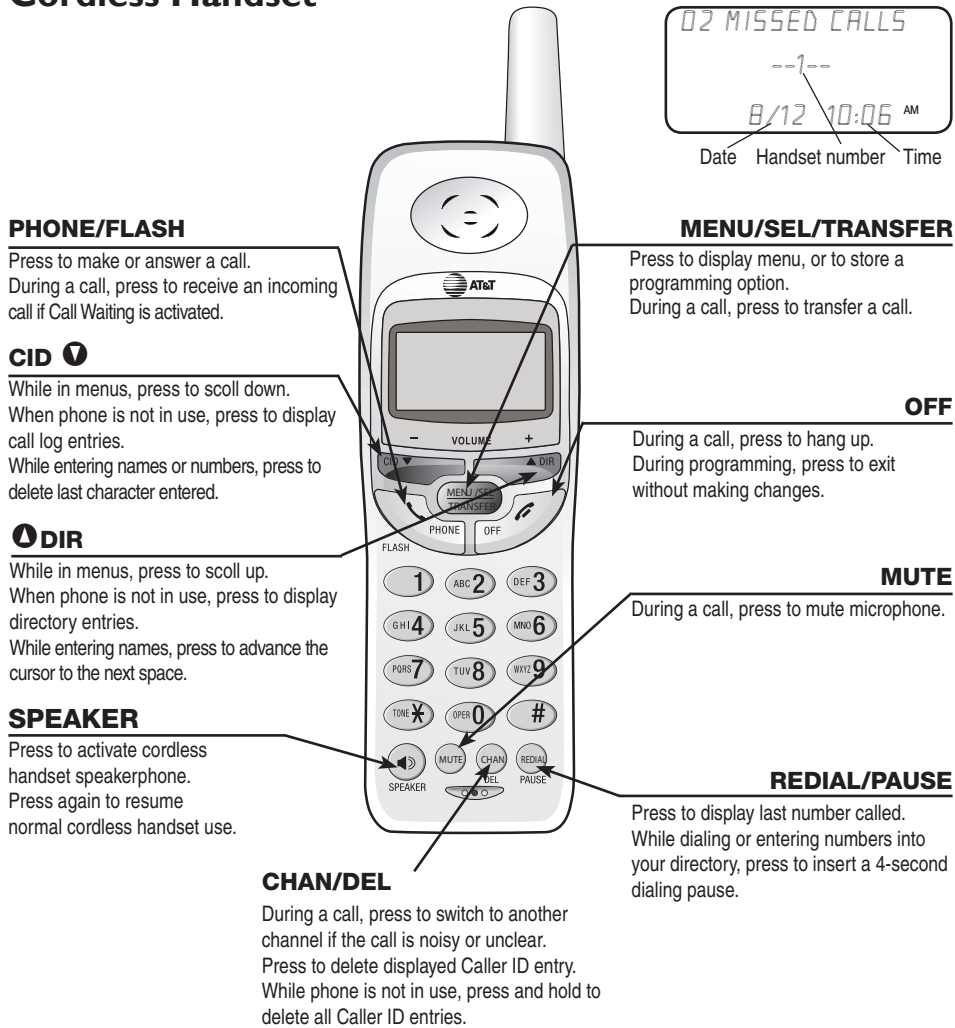
## Installation and setup

After battery installation, place the cordless handset in the base or charger and allow to charge for at least 16 hours before use. You can keep the battery charged by returning the cordless handset to the base or charger after each use. When the battery is fully depleted, a recharge takes about 16 hours. The talk time on a fully charged battery is about four hours depending on environmental conditions, and the standby time is approximately five days. Actual battery life will depend on usage conditions, and age of battery.



## Quick reference guide

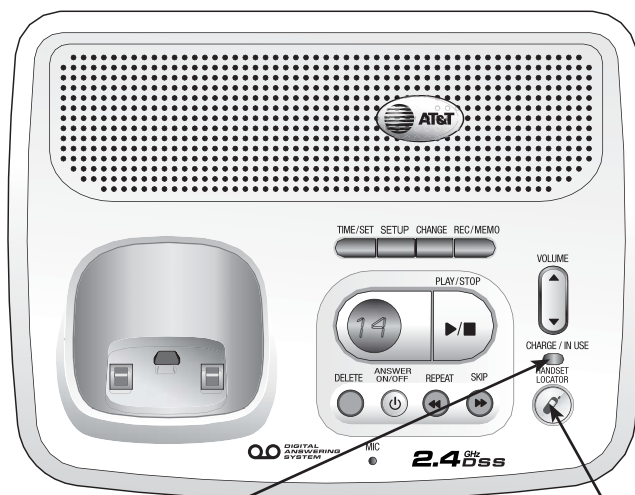
### Cordless Handset



**i** **NOTE:** For more information, please refer to the user's manual.

## Quick start guide

### Telephone Base



#### CHARGE/IN USE

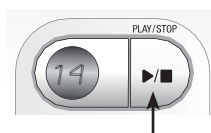
Flashes when one of the cordless handsets is in use.  
On steady when the cordless handset is properly positioned to charge in the base.  
Flashes during an incoming call's ringing.

#### HANDSET LOCATOR

Press to page the cordless handsets. Press again, press OFF on cordless handset, or place cordless handset in the base or charger to cancel the page (see the user's manual page 13 for details).



### Answering System Controls



Press to play or stop playing messages.

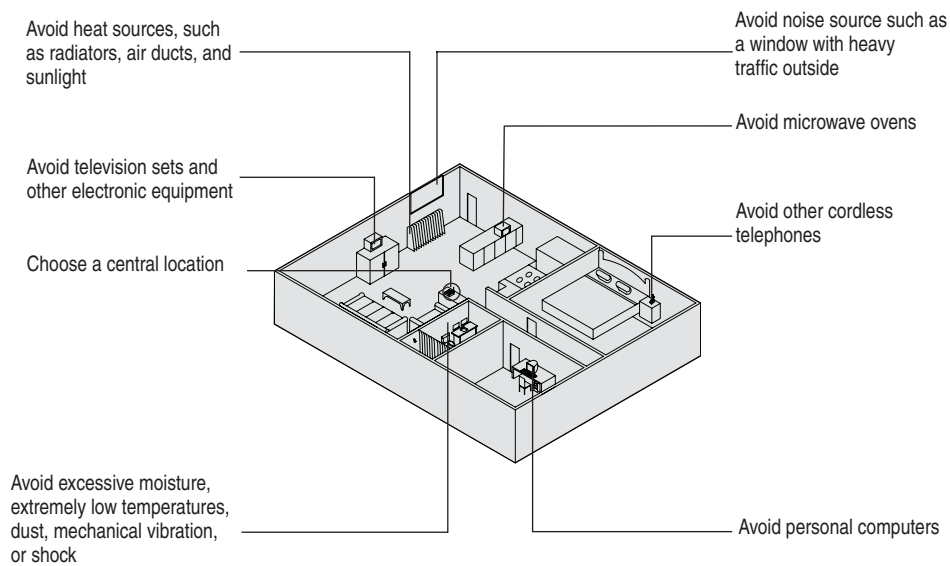
ANSWER ON/OFF.....Press to turn answering system on or off.  
DELETE.....Press to delete a message during playback. Press  
and hold to delete all old messages when idle.  
TIME/SET .....Press to review or set the answering system clock.  
SETUP.....Press to review or change an outgoing announcement.  
Press again to review or change answering system options.  
CHANGE .....Press to change a setup option.  
REC/MEMO.....Press to record a memo.



**NOTE:** For more information, please refer to the user's manual.

## Choose a locaton for your telephone

Choose a central location close to a telephone jack and a power outlet not connected to a wall switch. The telephone base can be placed on a flat surface or mounted on a standard wall plate. For optimum range and better reception, place the telephone base in a high and open location.



### Avoid placing the telephone base too close to:

- Communication devices such as: personal computers, computer routers, television sets, VCRs, wireless routers (wireless broadband, wi-fi, or 802.11), other cordless telephones, etc.
- Excessive heat sources such as radiators, ventilation ducts, and direct sunlight.
- Noise sources such as a window with traffic outside, motors, microwave ovens, refrigerators, and fluorescent lighting.
- Excessive dust sources such as: a workshop, garage, etc.
- Excessive moisture such as the bathroom, kitchen, sauna, or greenhouse.
- Extremely low temperatures such as the garage.
- Mechanical vibration or shock such as on top of the washing machine or on a work bench.

Copyright © 2006 Advanced American Telephones. All Rights Reserved.  
AT&T and the Globe Design are trademarks of AT&T Corp.,  
licensed to Advanced American Telephones. Printed in China. Issue 3 AT&T 05/06.  
96-006096-030-000.

