



*User Manual (Part 2)*

## **5.8 GHz Expansion Handset E560-I**

**For use with AT&T  
model  
E5634B/E5633/E5630/E5603B  
/E5600**



**You must charge the  
battery and register the  
handset before use.**



**See pages 2-3  
for easy instructions.**

For customer service or product  
information, visit our web site at  
**www.telephones.att.com**  
or call **1-800-222-3111**.

Please also read  
***Important Product  
Information***  
Enclosed in product package.

## Table of contents

Before you begin.....	1
Parts checklist .....	1
Battery & charging installation .....	2
Registration.....	3
Replacing a Handset.....	4
Re-Registering a Handset .....	5
Belt clip & optional headset.....	6
Quick reference guide.....	7

Copyright © 2004 Advanced American Telephones. All Rights Reserved.  
AT&T and the Globe Design are trademarks of AT&T Corp.,  
licensed to Advanced American Telephones.

## Before you begin

This cordless telephone operates with the maximum power allowed by the Federal Communications Commission (FCC). Even so, this handset and base can communicate over only a certain distance — which can vary with the locations of the base and handset, the weather, and the construction of your home or office.

**If you receive a call while you are out of range**, the handset might not ring — or if it does ring, the call might not connect when you press

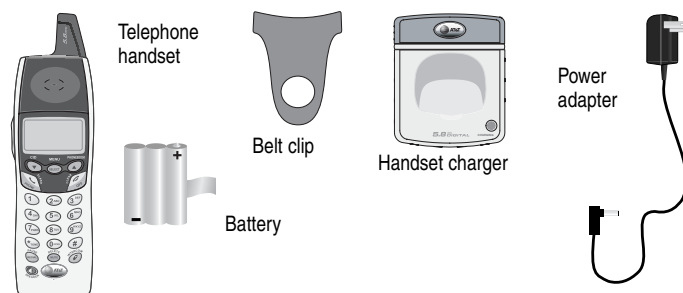
**PHONE**. Move closer to the base, then press **PHONE** to answer the call.

**If you move out of range during a phone conversation**, you might hear noise or interference. To improve reception, move closer to the base.

**If you move out of range without pressing OFF**, your phone will be left off the hook. To hang up properly, walk back toward the telephone base, periodically pressing **OFF** until the call is disconnected.

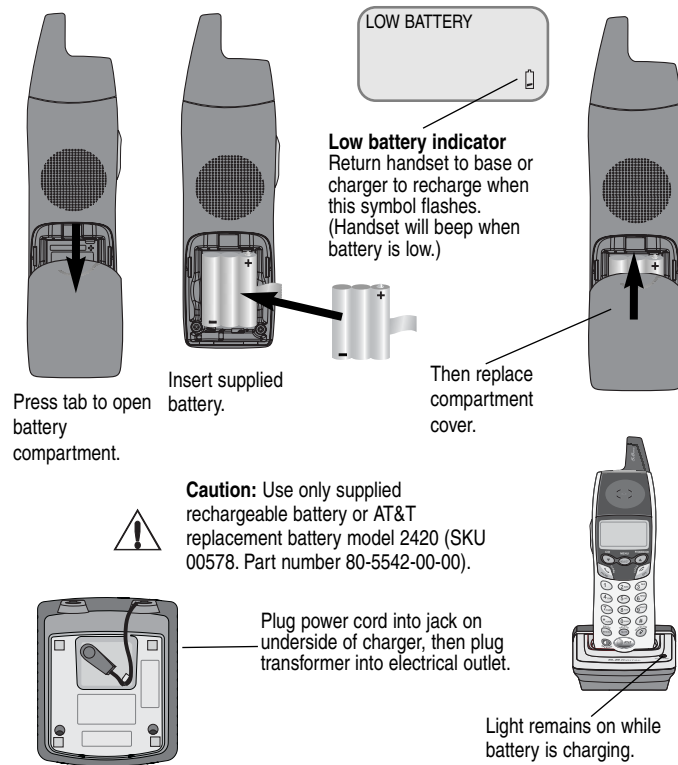
## Parts checklist

Remember to save your sales receipt and original packaging in case you ever need to ship your telephone for warranty service. Check to make sure the telephone package includes the following:



## Battery & charger installation

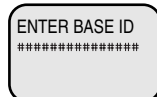
After installation, place the handset in the charger and allow the battery to charge for 15 hours before use. You can keep the battery charged by returning the handset to the charger after each use. When battery power is fully depleted, a full recharge takes about 12 hours. Average talk time on a fully charged battery is about eight hours depending on environmental conditions, standby time is approximately four days.



## Registration

Before using a new E560-I handset, you must register it with the E5633/E5630/E5603B/E5600 base. During registration, you must enter the 15-digit ID number of the telephone base. The Base ID is located on the bottom of the base unit.

Enter base ID, then press **SELECT**.



The handset provided with your E5600/E5630 is automatically registered as Handset 1. Additional handsets will be assigned numbers in the order they are registered (Handset 2, Handset 3, or Handset 4). You can register a maximum of 4 handsets.

The E5633/E5603B has 3 handsets automatically registered as Handset 1, 2 and 3. You can register one additional handset, which will be assigned number 4.

The E5634B has 4 handsets automatically registered as Handsets 1, 2, 3, and 4. You cannot register any additional handsets to the E5634B.

### To add a new handset:

- Make sure your handset batteries are properly installed and charged.
- Your handset will display "SEARCHING..."
- Press and hold the **SELECT** key until the handset displays "ENTER BASE ID".
- Enter the 15-digit Base ID number from the bottom of the base unit. (E5633/E5630/E5603B/E5600)
- Press **SELECT** to accept the code and complete registration.

**NOTE:** If an invalid base ID code is entered you will hear an error tone and the handset will continue to display "ENTER BASE ID". To make corrections while entering the code, you can erase digits by pressing the **DELETE** key.

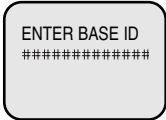
Once a valid base ID code is entered and accepted by the base unit, the new handset will be assigned the next available handset number (Handset 2, Handset 3, or Handset 4). You can register a maximum of four handsets per base unit.

## Replacing a Handset

If you are replacing a handset on a system that has the maximum number of handsets registered (4), or wish to change the assigned handset number of your registered handsets, you must first de-register the handsets, then re-register all handsets.

### De-Register All Handsets

- Unplug the power supply from the base unit.  
(E5634B/E5633/E5630/E5603B/E5600)
- **Remove all handsets from the charge cradles and base.**
- Plug in the power supply while pressing and holding the HANDSET LOCATOR button.
- Continue pressing HANDSET LOCATOR until the IN USE, CHARGING (E5634B/E5633/E5630/E5603B/E5600) and MESSAGE WAITING (E5603B and E5600 only) indicators are lit. (this could take up to 10 seconds).
- Release the HANDSET LOCATOR button.
- All Handsets will display:



ENTER BASE ID  
\*\*\*\*\*

Once the base indicators turn off (up to 30 seconds), the handsets have been de-registered from the base, and can now be re-registered (see page 5).

## Re-Registering a Handset

You can re-register handsets after de-registering from the base. Or you can re-register handsets to a new base unit, if you have replaced your base unit for any reason.

### To re-register a handset:

- Make sure your handset batteries are properly installed and charged.
- Your handset will display “SEARCHING...”.
- Press and hold the **SELECT** key until the handset displays “ENTER BASE ID”.
- Enter the 15 digit Base ID number from the bottom of the base.
- Press **SELECT** to accept the new code and complete re-registration.

### To re-register a handset to a new base unit:

- Make sure your handset batteries are properly installed and charged.
- Unplug the old base unit.
- Install the new base unit by plugging it into the electrical outlet and phone jack.
- Your handset will display “SEARCHING...”.
- Press and hold the **SELECT** key until the handset displays “ENTER BASE ID”.
- Enter the new 15-digit Base ID number from the bottom of the new base unit.
- Press **SELECT** to accept the new code and complete re-registration.

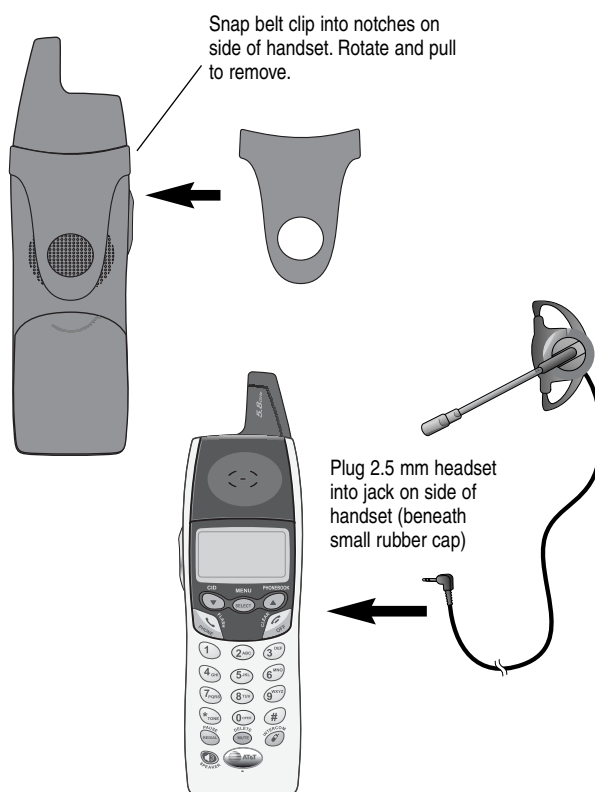
**i NOTE:** If an invalid base ID code is entered you will hear an error tone and the handset will continue to display “ENTER BASE ID”. To make corrections while entering the code, you can erase digits by pressing the **DELETE** key.

Once a valid base ID code is entered and accepted by the base unit, the new handset will be assigned the next available handset number (Handset 1, Handset 2, Handset 3, or Handset 4). You can register a maximum of four handsets per base unit.

## Belt clip & optional headset

Install belt clip as shown below if desired.

For hands-free telephone conversations, you can use any industry standard 2.5 mm headset (purchased separately). For best results use an AT&T 2.5 mm headset.





## Quick reference guide

For complete instructions, please refer to the manual provided with your E5634B, E5633, E5630, E5603B or E5600 telephone.

### Handset

#### ⬇ CID

Press to scroll down in menus.  
Press when phone is not in use to display Caller ID information. While entering names, press to move the cursor to the left.

#### Phone/Flash

Press to begin a call, then dial a number.  
During a call, press to receive an incoming call, if Call Waiting is activated.

#### Redial/Pause

Press to view redial memory.  
While entering numbers, press and hold to insert a dialing pause.

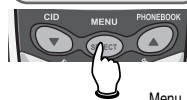
#### Speaker

Press to activate handset speakerphone.  
Press again to resume normal handset use (earpiece).

### Feature menu

> shows highlighted item

>PHONE BOOK  
CALL LOG



Menu

#### Feature Menu

Phone book  
Call Log  
Ringer Volume  
Ringer Tone  
Key Tone  
Language  
Clear MSG WAIT  
Dial Type

#### Select/Menu

Press to display menu, or to select highlighted item from menu.

#### ⬆ PHONE BOOK

Press to scroll up in menus.  
Press when phone is not in use to display phone book entries. While entering names, press to advance cursor.

#### Off/Clear

During a call, press to hang up.  
While using menus, press to cancel an operation, back up to the previous menu, or exit the menu display.

#### Mute/Delete

Press to mute microphone. While reviewing call log, press and hold to clear Caller ID log.

#### Intercom

Press to initiate an intercom conversation or transfer a call.



[www.telephones.att.com](http://www.telephones.att.com)

Copyright © 2004 Advanced American Telephones. All Rights Reserved.  
AT&T and the Globe Design are trademarks of AT&T Corp.,  
licensed to Advanced American Telephones. Printed in China. Issue 5 AT&T 07/05.  
91-000341-030-000