



at&t



Proud Sponsor

Quick start guide

**CL82100/CL82200/CL82250/
CL82300/CL82350/CL82400/
CL82450/CL82500/CL82550/
CL82600**

**DECT 6.0 cordless telephone/
answering system with
caller ID/call waiting**



Installation

You must install and charge the battery before using the telephone.



See pages 2-4 for easy instructions.

Install the telephone base close to a telephone jack and a power outlet not controlled by a wall switch. The telephone base can be placed on a flat surface or vertically mounted on the wall. For optimum range and better reception, place the telephone base in a central and open location.

If you subscribe to high-speed Internet service (digital subscriber line - DSL) through your telephone line, you must install a DSL filter between the telephone line cord and the telephone wall jack (see the following page). The filter prevents noise and caller ID problems caused by DSL interference. Please contact your DSL service provider for more information about DSL filters.

Your product may be shipped with a protective sticker covering the handset or telephone base display - remove it before use.

For customer service or product information, visit our website at

www.telephones.att.com or call **1 (800) 222-3111**. In Canada, dial **1 (866) 288-4268**.

Avoid placing the telephone base too close to:

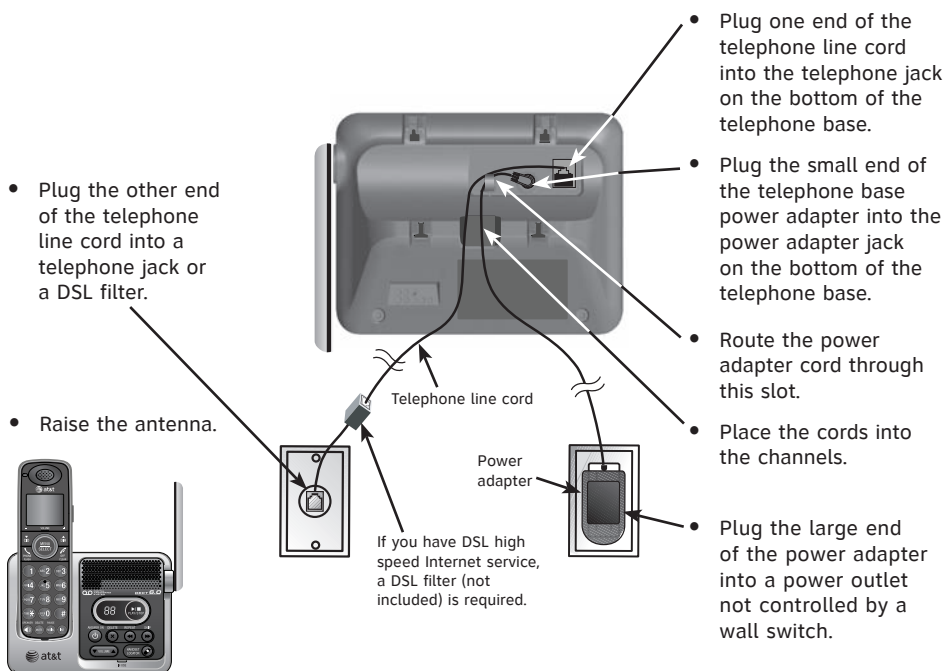
- Communication devices such as: television sets, VCRs, or other cordless telephones.
- Excessive heat sources.
- Noise sources such as a window with traffic outside, motors, microwave ovens, refrigerators, or fluorescent lighting.
- Excessive dust sources such as a workshop or garage.
- Excessive moisture.
- Extremely low temperature.
- Mechanical vibration or shock such as on top of the washing machine or workbench.

Telephone base and charger installation

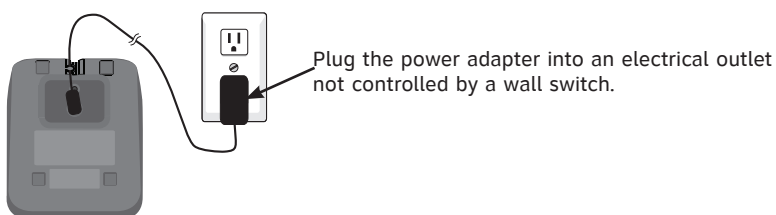
Install the telephone base and charger as shown below.

The telephone base is ready for tabletop use.

Telephone base installation



Charger installation




IMPORTANT INFORMATION

1. Use only the power adapter(s) supplied with this product. To order a replacement power adapter, visit our website at **www.telephones.att.com** or call **1 (800) 222-3111**. In Canada, dial **1 (866) 288-4268**.
2. The power adapters are intended to be correctly oriented in a vertical or floor mount position. The prongs are not designed to hold the plug in place if it is plugged into a ceiling, under-the-table or cabinet outlet.

Battery installation and charging

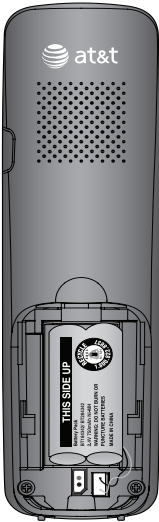
Install the battery as shown below. Once you have installed the battery, the screen indicates the battery status (see table below). If necessary, place the handset in the telephone base or charger to charge the battery. For best performance, keep the handset in the telephone base or charger when not in use. The battery is fully charged after 16 hours of continuous charging.

If the screen shows **Place in charger**, you need to charge the handset without interruption for at least 30 minutes to give the handset enough charge to use the telephone for a short time. The following table summarizes the battery charge indicators and actions to take.

Battery indicators	Battery status	Action
The screen is blank or shows Place in charger .	Battery has no or very little charge. The handset cannot be used.	Charge without interruption until the screen shows Low battery or HANDSET X (at least 30 minutes).
The screen shows Low battery and  flashes.	Battery has enough charge to be used for a short time.	Charge without interruption until the screen shows HANDSET X (at least 30 minutes).
The screen shows HANDSET X .	Battery is charged.	To keep the battery charged, place it in the telephone base or charger when not in use.

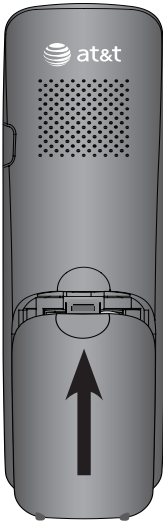


NOTE: If you are on a phone call in low battery mode, you hear four short beeps every minute.



Step 1

Plug the battery connector securely into the socket inside the handset battery compartment, matching the color-coded label. Insert the supplied battery with the label **THIS SIDE UP** facing up as indicated.



Step 2

Align the cover flat against the battery compartment, then slide it upwards until it clicks into place.

Battery installation and charging

CHARGE light



Step 3

Charge the handset by placing it face forward in the telephone base or charger. The **CHARGE** light on the top of the handset is on during charging.

After you install your telephone or power returns following a power outage, the handset will prompt you to set the date and time. To skip setting the date and time, press **OFF/CLEAR**.



IMPORTANT INFORMATION

1. Use only the supplied rechargeable battery or replacement battery (model BT166342). To order, visit our website at **www.telephones.att.com** or call **1 (800) 222-3111**. In Canada, dial **1 (866) 288-4268**.
2. If you do not use the handset for a long time, disconnect and remove the battery to prevent possible leakage.

Quick reference guide - handset

CHARGE indicator

On when the handset is charging in the telephone base or charger.

▼CID/-VOLUME

Press ▼CID to show caller ID history.

Press to scroll down while in menus.

While entering names or numbers, press to move the cursor to the left.

Press to decrease the listening volume when on a call.

PHONE/FLASH

Press to make or answer a call.

During a call, press to answer an incoming call when you receive a call waiting alert.

1

While reviewing a call log entry, press repeatedly to add or remove 1 in front of the telephone number before dialing or saving it in the directory.

TONE ✕

Press to switch to tone dialing temporarily during a call if you have pulse service.

🔊/SPEAKER

Press to switch between speakerphone and handset.

MUTE/DELETE

During a call, press to mute the microphone.

While reviewing the caller ID history, the directory or the redial memory, press to delete an individual entry.

While predialing, press to delete digits.

MENU/SELECT

Press to show the menu.

While in the menu, press to select an item or save an entry or setting.

▲DIR/VOLUME+

Press ▲DIR to show directory entries.

Press to scroll up while in menus.

While entering names or numbers, press to move the cursor to the right.

Press to increase the listening volume when on a call.

OFF/CLEAR

During a call, press to hang up.

While in a menu, press to cancel an operation, back up to the previous menu, or exit the menu display.

Press and hold while the telephone is not in use to erase the missed calls indicator.

#

Press repeatedly to display other dialing options when reviewing a call log entry.

REDIAL/PAUSE

Press repeatedly to view the last 20 numbers dialed.

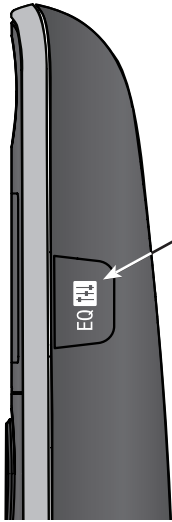
While entering numbers, press and hold to insert a dialing pause.

INT

Press to begin an intercom conversation or to transfer a call.



Quick reference guide - handset

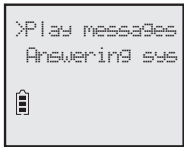


EQ

During an outside call, intercom call, message or announcement playback, press to change the quality of the audio to best suit your hearing.

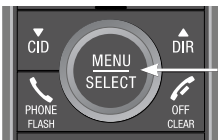
Main menu

The > symbol highlights a menu item.



Main menu

- Play messages
- Answering sys
- Directory
- Call log
- Ringers
- Settings
- Website



Using menus

Press **MENU/SELECT** to show the first menu item, **Play messages**.

Press **▼CID** or **▲DIR** to scroll through menu items.

Press **MENU/SELECT** to confirm or save changes to a highlighted menu item.

Press **✎ OFF/CLEAR** to cancel an operation, back up to the previous menu, or exit the menu display.

Quick reference guide - telephone base

X/DELETE

Press to delete the message currently playing.
Press twice to delete all old messages when the phone is not in use.

⏻/ANSWER ON

Press to turn the built-in answering system on or off.

▲▼VOLUME

During message playback, press to adjust the listening volume.

While in idle mode, press to adjust the base ringer volume.

IN USE indicator

On when the handset is on a call or the answering system is answering an incoming call.

Flashes quickly when there is an incoming call.

Message counter

Number of messages (or during playback, message number currently playing).

▶/■/PLAY/STOP

Press to start or stop message playback.

◀◀/REPEAT

Press to repeat a message.
Press twice to play the previous message.

▶▶/SKIP

Press to skip a message.

📞/HANDSET LOCATOR

Press to make handsets beep so you can locate them.



Answering system settings

Announcement

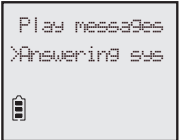
Your outgoing announcement plays when calls are answered by the answering system.

The telephone has a default outgoing announcement, *"Hello. Please leave a message after the tone."* You can use this announcement, or record your own announcement.

You can record an announcement up to 90 seconds. The system does not record any announcement shorter than two seconds.

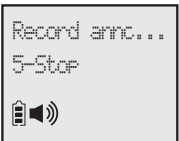
To play your current outgoing announcement:

1. When the handset is in idle mode, press **MENU/SELECT** to enter the main menu.
2. Press **▼CID** or **▲DIR** to scroll to **>Answering sys**, then press **MENU/SELECT**.
3. Press **MENU/SELECT** again to select **>Announcement**. The system announces, *"To play, press 2. To record, press 7."*
4. Press **2** to play the current announcement.



To record a new outgoing announcement:

1. When the handset is in idle mode, press **MENU/SELECT** to enter the main menu.
2. Press **▼CID** or **▲DIR** to scroll to **>Answering sys**, then press **MENU/SELECT**.
3. Press **MENU/SELECT** again to select **>Announcement**. The system announces, *"To play, press 2. To record, press 7."*
4. Press **7** to record an announcement. The system announces, *"Record after the tone. Press 5 when you are done."*
5. Facing the handset record your announcement and press **5** to end recording. Your recorded announcement plays.



To listen to the recorded announcement again, press **2** after playback is completed. To record a new announcement, press **7** and follow the above steps in the **To record a new outgoing announcement** section.

To delete your outgoing announcement:

1. When the handset is in idle mode, press **MENU/SELECT** to enter the main menu.
2. Press **▼CID** or **▲DIR** to scroll to **>Answering sys**, then press **MENU/SELECT**.
3. Press **MENU/SELECT** again to select **>Announcement**. The system announces, *"To play, press 2. To record, press 7."*
4. Press **3** to delete your recorded announcement.

When your announcement is deleted, the system answers calls with the default announcement.



Proud Sponsor

www.telephones.att.com