



*Quick start guide*

**E2901**

**2.4 GHz cordless telephone/  
with caller ID/call waiting**



## Installation and setup

After installing the battery, you may be able to make and receive short calls. For best performance, place the handsets in the telephone base or the charger and charge for 16 hours before use.

You can keep the battery charged by returning the handsets to the telephone base or the charger after use. When the battery is fully depleted, a recharge takes about 12 hours. The average talk time on a fully charged battery is about eight hours, and the standby time is approximately five days. Actual battery life depends on usage conditions and age of battery.



**1.** Insert the plug as indicated. Be sure to securely insert the plug, making sure matches the color-coded label inside the battery compartment.

**2.** Place the battery pack and wires inside the compartment.

**3.** Slide the battery compartment cover up until it clicks.



**NOTE:** Under normal conditions, the battery should last around one year. This may vary depending on usage.



**Caution:** Use only the supplied rechargeable battery or replacement battery (model 27910, part number 89-0099-00-00) or equivalent. To order a replacement battery, visit our website at [www.telephones.att.com](http://www.telephones.att.com) or call 1 (800) 222-3111. In Canada dial 1 (866) 288-4268.

Choose a central location close to a telephone jack and an electrical outlet not controlled by a wall switch. The telephone base can be placed on a flat surface or mounted on a standard wall plate. For optimum range and better reception, place the telephone base in a high and open location.

### Avoid placing the telephone base too close to:

- Communication devices such as: personal computers, computer routers, television sets, VCRs, wireless routers (wireless broadband, wi-fi, or 802.11) or other cordless telephones.
- Excessive heat sources.
- Noise sources such as a window with traffic outside, motors, microwave ovens, refrigerators, or fluorescent lighting.
- Excessive dust sources such as a workshop or garage.
- Excessive moisture.
- Extremely low temperatures.
- Mechanical vibration or shock such as on top of the washing machine or work bench.

# Installation and setup

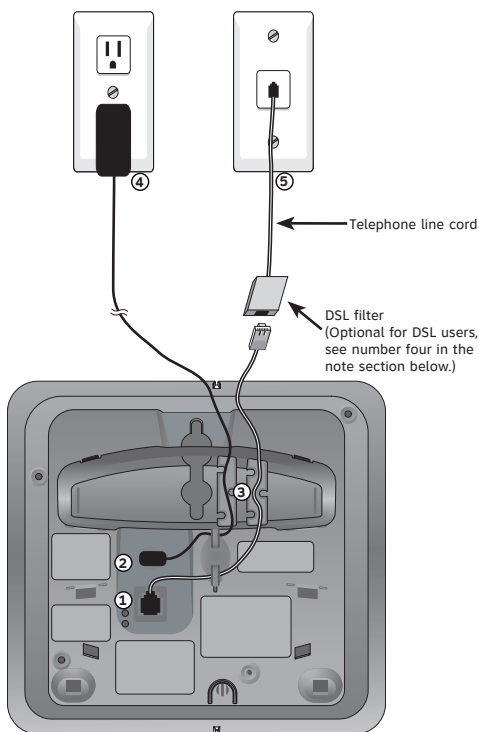
**1.** Plug one end of the telephone line cord into the telephone jack at the bottom of the telephone base.

**2.** Plug the small end of the power adapter into the power jack at the bottom of the telephone base.

**3.** Route cords through slots.

**4.** Plug the large end of the power adapter into an electrical outlet not controlled by a wall switch.

**5.** Plug the other end of the telephone line cord into a wall telephone jack.



You may be able to make and receive short calls. For best performance, place the handset in telephone base to charge for at least 16 hours before first use.



## NOTES:

1. Use only the power adapter supplied with this product. To order a replacement power adapter, visit our website at [www.telephones.att.com](http://www.telephones.att.com) or call 1 (800) 222-3111. In Canada dial 1 (866) 288-4268.
2. Be sure to use an electrical outlet not controlled by a wall switch.
3. This power unit is intended to be correctly oriented in a vertical or floor mount position. The prongs are not designed to hold the plug in place if it is plugged into a ceiling, under-the-table or cabinet outlet.
4. If you receive high speed internet through your telephone line (commonly referred to as DSL), and you are experiencing interference during telephone conversations and/or your caller ID features are not functioning properly, install a DSL filter to the telephone line between the telephone base and the telephone wall jack. Contact your DSL service provider for a DSL filter.

## Quick reference guide

### Cordless handset

#### ▼ CID/-VOLUME

Press to scroll down while in menus. Press to display caller ID information. While entering names or numbers, press to move the cursor to the left. Press to decrease the listening volume while on a call.

#### PHONE/FLASH

Press to make or answer a call. During a call, press to receive an incoming call if call waiting is activated.

#### MUTE

While on a call, press to mute microphone.

#### 🔊 SPEAKER

Press to activate handset speakerphone. Press again to resume normal handset use.

#### MENU/SELECT

Press to display the menu. Once in the menu, press to select an item or save an entry or setting.

#### DIR ▲/VOLUME+

Press to scroll up while in menus. Press to display directory entries. While entering names or numbers, press to move the cursor to the right. Press to increase the listening volume while on a call.

#### OFF/CLEAR

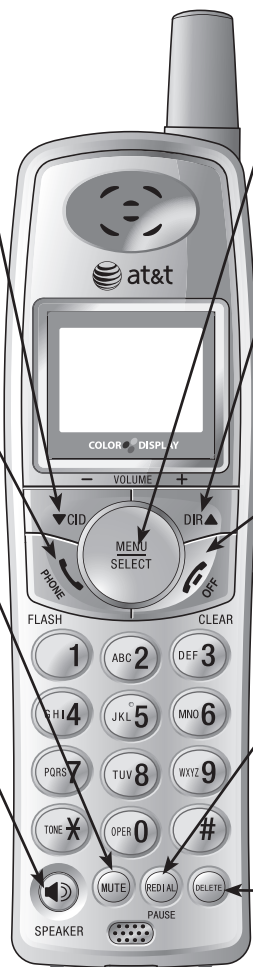
During a call, press to hang up. While using menus, press to cancel an operation, back up to the previous menu, or exit the menu display. While predialing, press to delete digits.

#### REDIAL/PAUSE

Press to view redial memory. While entering numbers, press and hold to insert a dialing pause.

#### DELETE

While reviewing the call log, press to delete an individual entry, or press and hold to clear the caller ID log. While entering or editing a name or number, press to delete a character.









## Feature menu

□ Shows a highlighted item



Menu

#### Feature menu

-  DIRECTORY
-  CALL LOG
-  SETTINGS
-  SOUNDS
-  DISPLAY
-  RINGER VOLUME

#### Using menus

Press ▼CID/-VOLUME or DIR▲/VOLUME+ to scroll through menu items.

Press MENU/SELECT to select or modify a highlighted item.

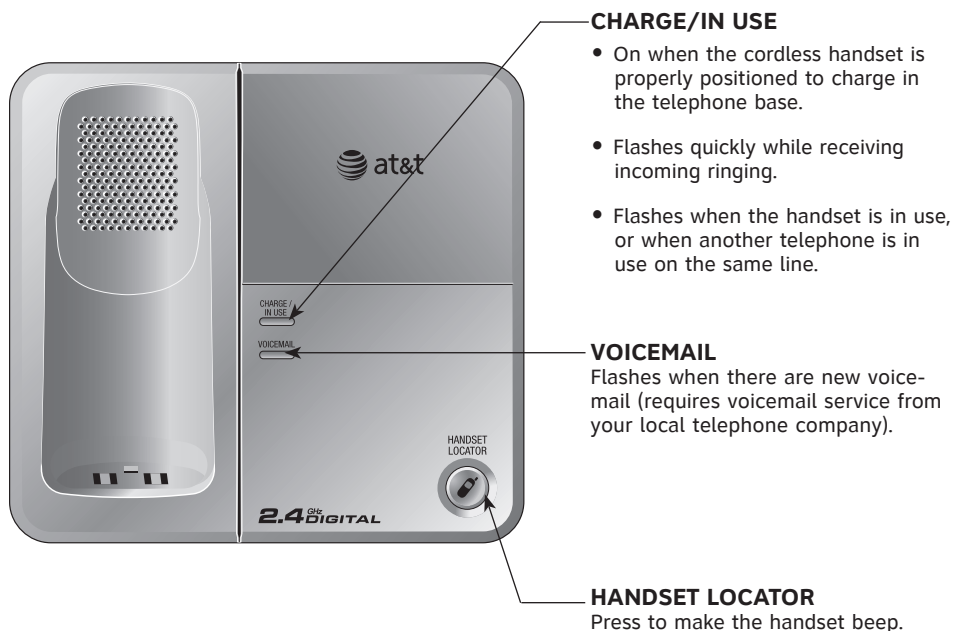
Press OFF/CLEAR to cancel an operation, back up to the previous menu, or exit the menu display.



**NOTE:** For more information, please refer to the user's manual.

## Quick reference guide

### Telephone base



**NOTE:** For more information, please refer to the user's manual.



[www.telephones.att.com](http://www.telephones.att.com)