



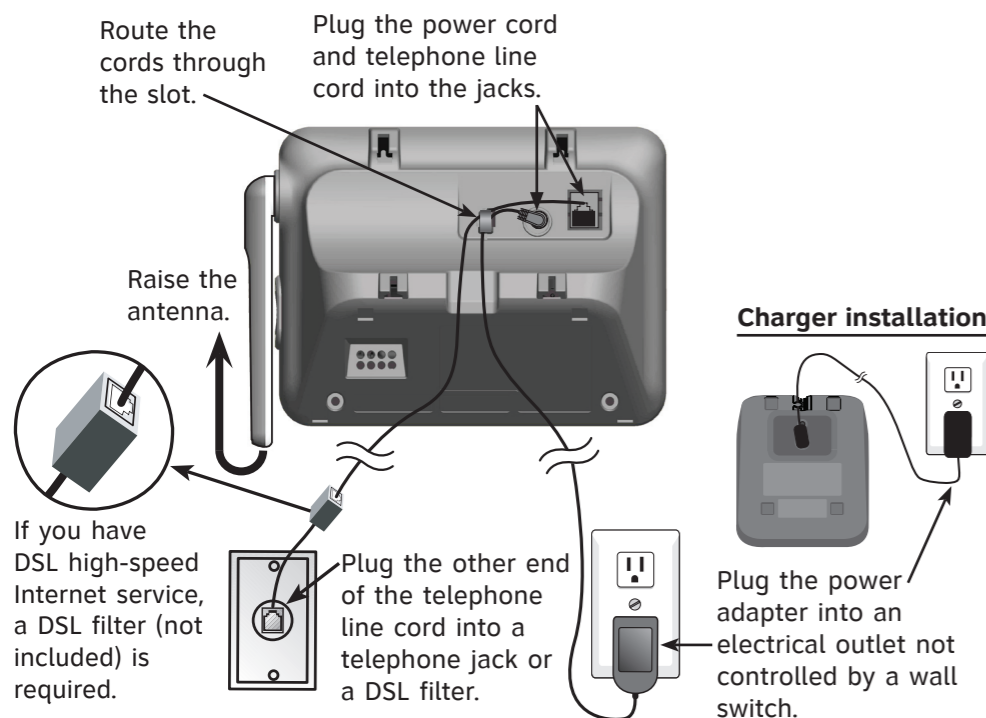
at&t

Quick start guide

CL82101/CL82201/CL82301/CL82351/CL82401/CL82451/
CL82501/CL82551/CL82601

This quick start guide provides you with basic instructions only. For more complete instructions, refer to your Abridged user's manual provided in the package, or see the online Complete user's manual at www.telephones.att.com/manuals.

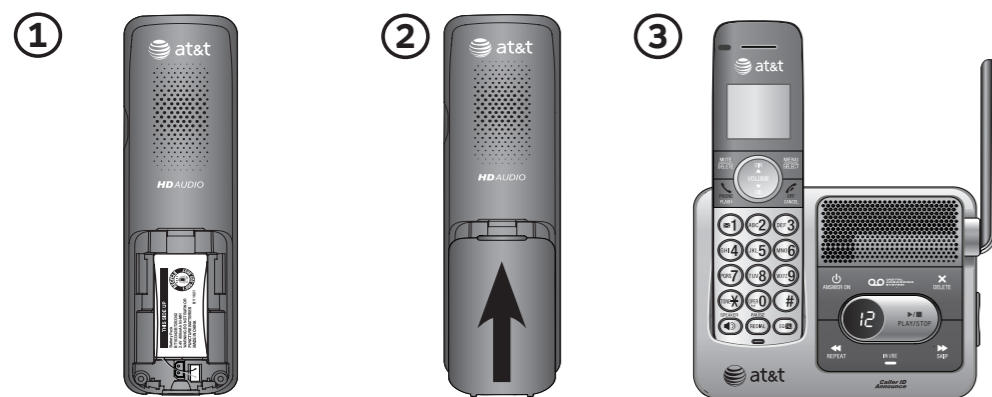
Telephone base installation



Caution: Use only the power adapter provided with this product. To obtain a replacement, visit our website at www.telephones.att.com or call 1 (800) 222-3111. In Canada, dial 1 (866) 288-4268.

Battery installation

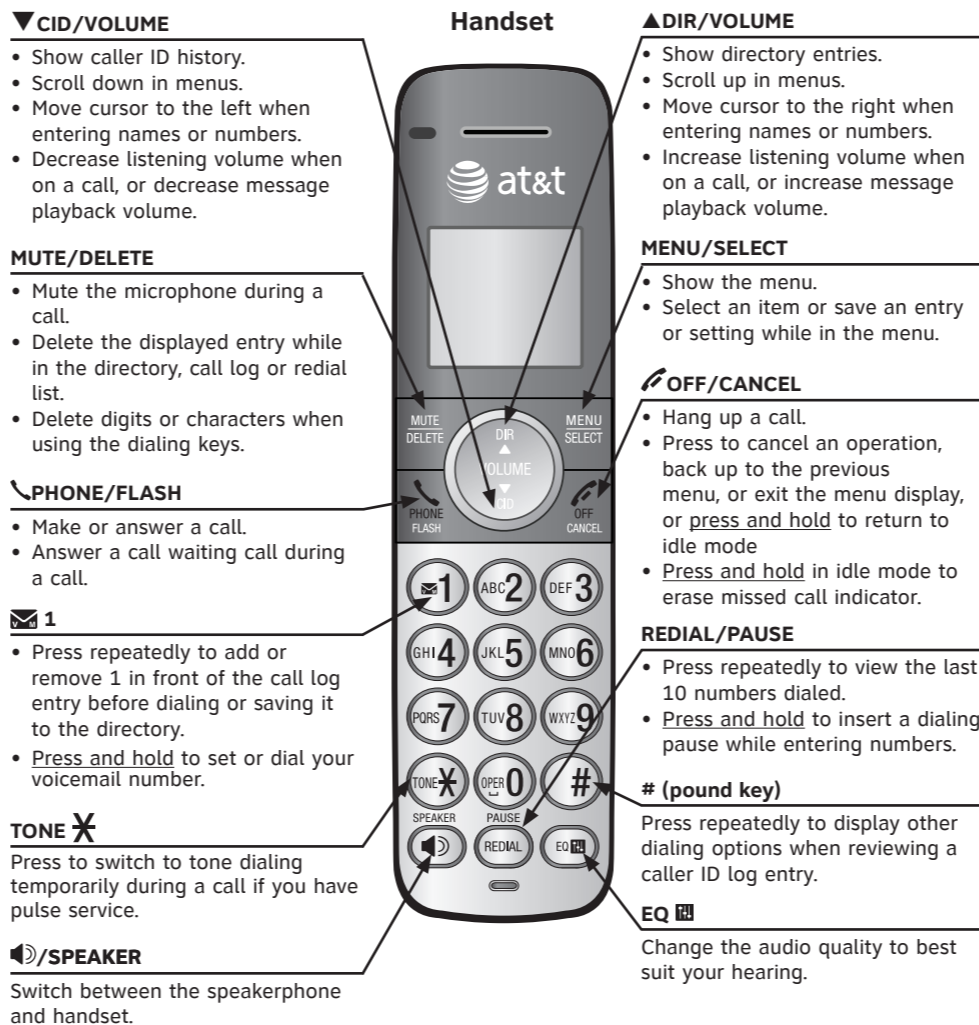
Install the battery as shown below. Charge your handset(s) before initial use. The battery is fully charged after 10 hours of continuous charging.



1. Plug the battery connector securely into the socket inside the handset battery compartment. Insert the supplied battery with the label **THIS SIDE UP** facing up as indicated.
2. Align the cover flat against the battery compartment, then slide it upwards until it clicks into place.
3. Charge the handset by placing it face forward in the telephone base or charger.

Caution: Use only the supplied rechargeable battery or replacement battery (model BT166342).

Quick reference guide



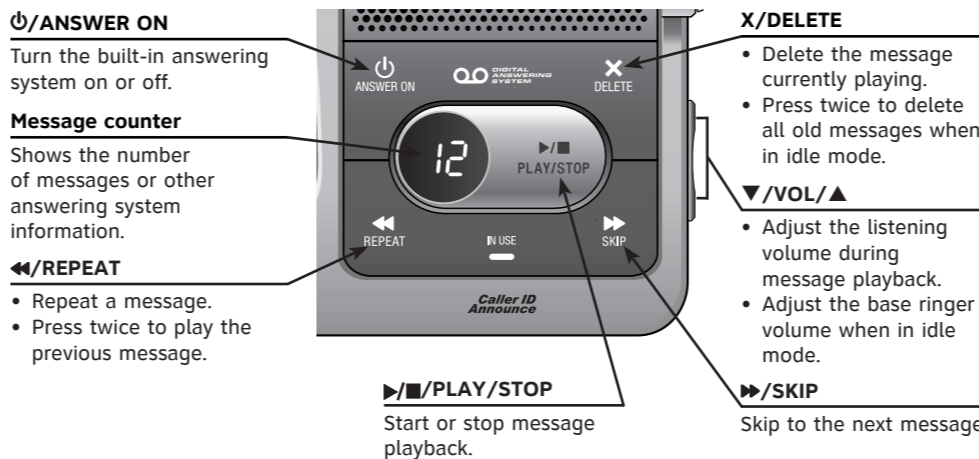
Handset side view



Push to talk

- Press to initiate a one-to-one or one-to-group broadcast.
- Press and hold to broadcast to a group of handsets.

Telephone base



Initial settings

We recommend you program your telephone system before use.

The following are a few examples of common features to set before using the telephone. Refer to the **Handset settings** and **Answering system settings** in the Abridged user's manual or the online Complete user's manual for detailed instructions on setting all telephone features.

Set date/time

Set the date/time before using the answering system.

1. **MENU** -> ▼ or ▲ -> **Set date/time** -> **SELECT**.
2. Enter the month, day and year using the dialing keys -> **SELECT**.
3. Enter the hour and minute using the dialing keys.
4. ▼ or ▲ to choose **AM** or **PM** -> **SELECT**.

Record your own announcement

Your outgoing announcement plays when calls are answered by the answering system. You can use the preset announcement to answer calls, or replace it with your own recorded announcement.

1. **MENU** -> ▼ or ▲ -> **Answering sys** -> **SELECT**.
2. **SELECT** to select **Announcement**.
3. ▼ or ▲ -> **Record annnc** -> **SELECT**.
4. Facing the handset, record your announcement and press **5** to end recording.

Number of rings

You can set the answering system to answer an incoming call after 2, 3, 4, 5 or 6 rings, or toll saver. If you choose toll saver, the answering system answers a call after 2 rings if you have new messages, or after 4 rings when there are no new messages.

If you want the built-in answering system instead of the voicemail to answer a call, you should set the answering system to answer a call at least 2 rings before the voicemail is set to answer. Contact your telephone service provider for information on your voicemail settings.

1. **MENU** -> ▼ or ▲ -> **Answering sys** -> **SELECT**.
2. ▼ or ▲ -> **Ans sys setup** -> **SELECT**.
3. ▼ or ▲ -> **# of rings** -> **SELECT**.
4. ▼ or ▲ -> choose among **2, 3, 4, 5, 6** or **Toll Saver** -> **SELECT**.

Handset ringer volume

You can set the ringer volume level to one of the six levels or turn the ringer off.

1. **MENU** -> ▼ or ▲ -> **Ringers** -> **SELECT**.
2. **SELECT** to select **Ringer volume** -> **SELECT**.
3. ▼ or ▲ to choose the desired level -> **SELECT**.

Reset language to English

If you have accidentally changed the screen display language and want to switch it back to English, follow the steps below.

- **MENU** in idle mode-> enter **364#** -> **SELECT**.

Telephone operation

Operation	Steps
Making a call	Press \PHONE or ☎/SPEAKER -> Enter the telephone number.
On-hook dialing (predialing)	Enter the telephone number -> Press \PHONE or ☎/SPEAKER to call.
Answering a call	Press \PHONE or ☎/SPEAKER , or press any dialing keys (0-9 , TONE ✕ or #).
Ending a call	Press ☎OFF or return the handset to the telephone base or charger.
Speakerphone	During a call, press ☎/SPEAKER to switch between handsfree speakerphone and normal handset use.
Redial	Press REDIAL repeatedly to select the desired entry -> \PHONE or ☎/SPEAKER to call.
Volume control	Press VOLUME▼ to decrease or press VOLUME▲ to increase the listening volume during a call.
Call waiting (Requires subscription from telephone service provider)	Press \FLASH to put current call on hold and to take the new call; press again to switch back and forth between calls.

Caller ID

This product supports caller ID services offered by most telephone service providers. The telephone stores caller ID information for the last 50 incoming calls in the telephone base. This information is common to all handsets.

Missed call indicator
When a handset is in idle mode and has new or missed calls, its screen shows XX Missed calls . You can erase the missed call indicator either by reviewing the call log one by one, or by <u>pressing and holding</u> CANCEL on the handset in idle mode.
Review and dial a number in the call log
1. CID in idle mode -> ▼ or ▲ to scroll through the list. 2. \PHONE or ☎/SPEAKER to call when the desired entry is displayed.
Caller ID announce
When this feature is on and you have an incoming call, the handset and/or base speaks "Call from..." and the name of the caller based on the directory or caller ID information. You can turn this feature on or off for the base or each individual handset, or both. 1. MENU -> ▼ or ▲ -> Settings -> SELECT . 2. ▼ or ▲ -> Caller ID annnc -> SELECT . 3. ▼ or ▲ to choose Set all On/Off, Local handset, or Base -> SELECT . 4. ▼ or ▲ to choose On or Off -> SELECT .

Directory

The directory can store up to 50 entries, which are shared by all system handsets.

Operation	Steps
Adding an entry	1. MENU . 2. ▼ or ▲ -> Directory -> SELECT . 3. ▼ or ▲ -> Add contact -> SELECT . 4. Enter a telephone number up to 30 digits -> SELECT . 5. Enter a name up to 15 characters -> SELECT .
Searching/dialing an entry	1. DIR in idle mode. 2. Press ▼ or ▲ to browse through the directory, or press the dialing keys (0-9) to start a name search. 3. Press \PHONE or ☎/SPEAKER to call.

Answering system

About answering system and voicemail																					
Your telephone has separate indicators for two different types of voice messages: those left on the built-in answering system and those left at your telephone service provider's voicemail. To listen to messages recorded on the built-in answering system, refer to the Message playback section below; to listen to voicemail, contact your telephone service provider for more information.																					
Turn answering system on/off																					
The answering system must be turned on to answer and record messages. Press ☎/ANSWER ON on the telephone base to turn the built-in answering system on or off. When it is turned on, the ☎/ANSWER ON light on the telephone base turns on and ANS ON displays on the handset.																					
Message alert tone																					
When this feature is on, and there is at least one new message, the telephone base beeps every 10 seconds. 1. MENU -> ▼ or ▲ -> Answering sys -> SELECT . 2. ▼ or ▲ -> Ans sys setup -> SELECT . 3. ▼ or ▲ -> Msg alert tone -> SELECT . 4. ▼ or ▲ -> On or Off -> SELECT .																					
Call screening																					
Use this feature to choose whether incoming messages can be heard over the telephone base speaker when they are being recorded. If you turn call screening on, you hear the incoming message. While monitoring an incoming message, you can answer the call by pressing \PHONE on the handset. 1. MENU -> ▼ or ▲ -> Answering sys -> SELECT . 2. ▼ or ▲ -> Ans sys setup -> SELECT . 3. SELECT to select Call screening . 4. ▼ or ▲ -> choose On or Off -> SELECT .																					
Message playback																					
Using the telephone base: Press ▶/■/PLAY when the telephone base is in idle mode. Using a handset: Press MENU twice when the handset is in idle mode.																					
Options during playback																					
<table border="1"> <thead> <tr> <th>Feature</th> <th>On the telephone base</th> <th>On a handset</th> </tr> </thead> <tbody> <tr> <td>Adjust playback volume</td> <td>Press ▼/VOL/▲</td> <td>Press ▼VOLUME or ▲VOLUME</td> </tr> <tr> <td>Stop playback</td> <td>Press ▶/■/STOP</td> <td>Press 5</td> </tr> <tr> <td>Skip to the next message</td> <td>Press ▶/SKIP</td> <td>Press 6</td> </tr> <tr> <td>Repeat the message</td> <td>Press ◀/REPEAT</td> <td>Press 4</td> </tr> <tr> <td>Play the previous message</td> <td>Press ◀/REPEAT twice</td> <td>Press 4 twice</td> </tr> <tr> <td>Delete the message</td> <td>Press X/DELETE</td> <td>Press DELETE</td> </tr> </tbody> </table>	Feature	On the telephone base	On a handset	Adjust playback volume	Press ▼/VOL/▲	Press ▼VOLUME or ▲VOLUME	Stop playback	Press ▶/■/STOP	Press 5	Skip to the next message	Press ▶/SKIP	Press 6	Repeat the message	Press ◀/REPEAT	Press 4	Play the previous message	Press ◀/REPEAT twice	Press 4 twice	Delete the message	Press X/DELETE	Press DELETE
Feature	On the telephone base	On a handset																			
Adjust playback volume	Press ▼/VOL/▲	Press ▼VOLUME or ▲VOLUME																			
Stop playback	Press ▶/■/STOP	Press 5																			
Skip to the next message	Press ▶/SKIP	Press 6																			
Repeat the message	Press ◀/REPEAT	Press 4																			
Play the previous message	Press ◀/REPEAT twice	Press 4 twice																			
Delete the message	Press X/DELETE	Press DELETE																			

For more detailed instructions, please refer to the Abridged user's manual provided in your package, or for a full set of installation and operation instructions, refer to the online **CL82101/CL82201/CL82301/CL82351/CL82401/CL82451/CL82501/CL82551/CL82601 DECT 6.0 cordless telephone/answering system with caller ID/call waiting** Complete user's manual at www.telephones.att.com/manuals.

For customer service or product information, visit our website at www.telephones.att.com or call **1 (800) 222-3111**. In Canada, dial **1 (866) 288-4268**.