



at&t



Proud Sponsor

Quick start guide

CL84109/CL84209/CL84309
DECT 6.0 corded/cordless
telephone/answering system
with caller ID/call waiting



Installation

You must install and charge the battery before using the telephone.



See pages 5-6 for easy instructions.

Install the telephone base close to a telephone jack and a power outlet not controlled by a wall switch. The telephone base can be placed on a flat surface or vertically mounted on the wall. For optimum range and better reception, place the telephone base in a central and open location.

If you subscribe to high-speed Internet service (digital subscriber line - DSL) through your telephone line, you must install a DSL filter between the telephone line cord and the telephone wall jack (see page 3). The filter prevents noise and caller ID problems caused by DSL interference. Please contact your DSL service provider for more information about DSL filters.

Your product may be shipped with a protective sticker covering the handset or telephone base display - remove it before use.

For customer service or product information, visit our website at

www.telephones.att.com or call **1 (800) 222-3111**. In Canada, dial **1 (866) 288-4268**.

Avoid placing the telephone base too close to:

- Communication devices such as: television sets, VCRs, or other cordless telephones.
- Excessive heat sources.
- Noise sources such as a window with traffic outside, motors, microwave ovens, refrigerators, or fluorescent lighting.
- Excessive dust sources such as a workshop or garage.
- Excessive moisture.
- Extremely low temperature.
- Mechanical vibration or shock such as on top of the washing machine or workbench.

Backup batteries installation and use

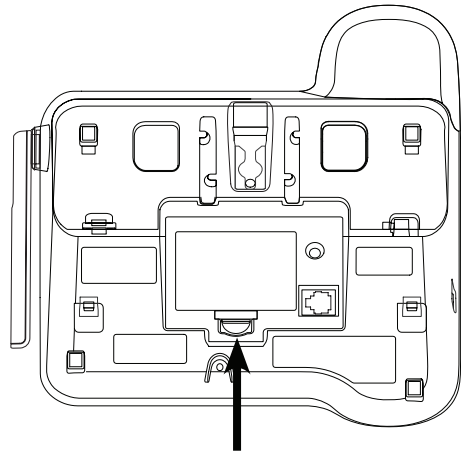
In the event of a power failure, your telephone can still operate with limited functions if there are backup batteries (purchased separately) installed in the telephone base. If a power failure happens during a call on the corded handset, the call continues (at the lowest volume) until you hang up; while a call on the cordless handset or speakerphone disconnects immediately.

During a power failure, you can still make and answer calls using the corded handset. However, you cannot make or answer calls on the cordless handset or speakerphone.

If power resumes while you are on a call, the call continues and the telephone resets once you hang up.

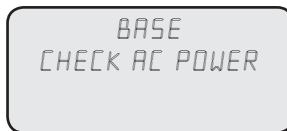
Follow the steps below to install backup batteries.

1. Make sure the telephone line cord and power adapter cord are not connected to the telephone base.
2. Press the tab on the base battery cover (on the bottom of the telephone base) toward the cover and swing open the battery door.
3. Insert three new AAA alkaline batteries, matching the + and - signs engraved on the telephone base.
4. Replace the backup battery cover onto the telephone base; the cover clicks into place when it is attached properly.



Battery compartment tab

During a power failure, if the backup batteries are installed, the telephone base displays **CHECK AC POWER**.



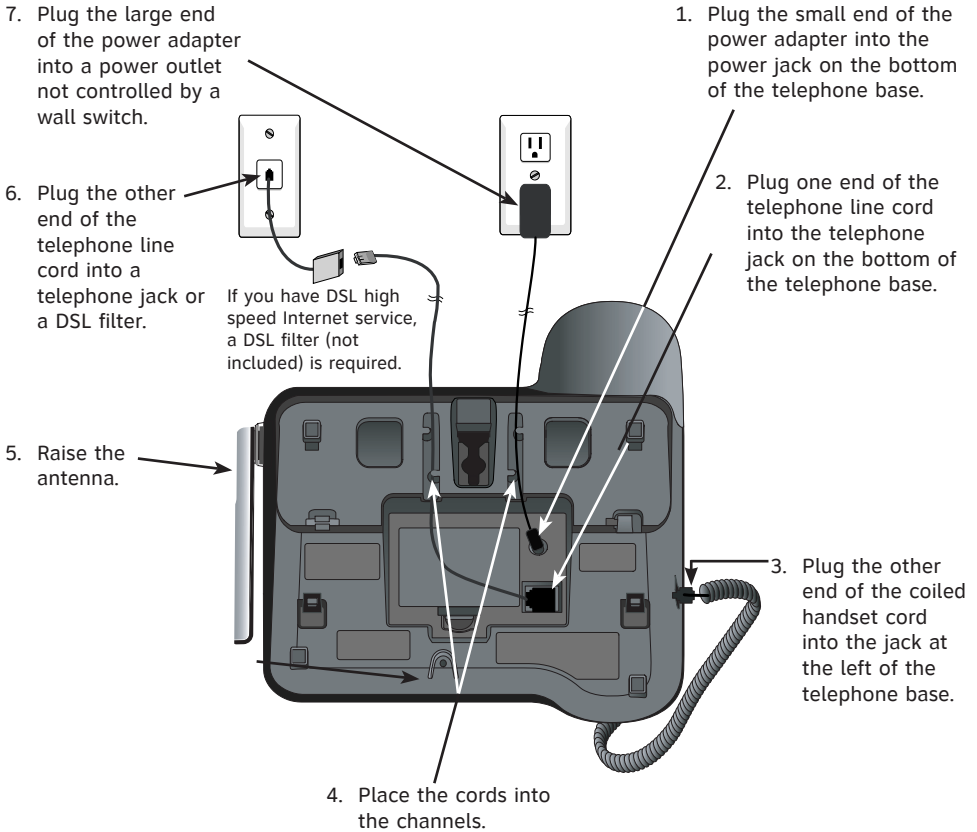
NOTES:

1. With backup batteries, the base ringer and the handset listening volume will be at the lowest setting.
2. We recommend changing the batteries every nine months.

Telephone base installation

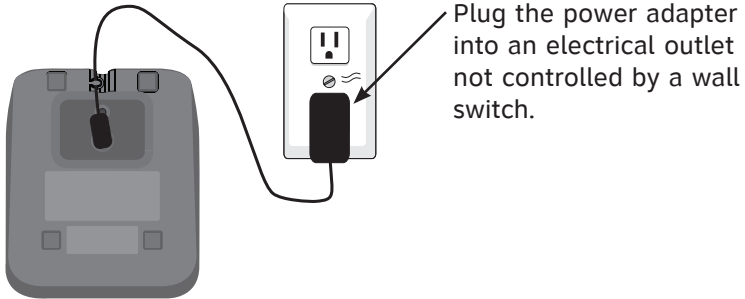
Install the telephone base as shown below.

The telephone base is ready for tabletop use. If you want to change to wall mounting, see the user's manual for details.



Charger installation

Install the charger as shown below.





IMPORTANT INFORMATION


1. Use only the power adapter(s) supplied with this product. To order a replacement power adapter, visit our website at www.telephones.att.com or call **1 (800) 222-3111**. In Canada, dial **1 (866) 288-4268**.
2. The power adapters are intended to be correctly oriented in a vertical or floor mount position. The prongs are not designed to hold the plug in place if it is plugged into a ceiling, under-the-table or cabinet outlet.

Battery installation & charging

Install the battery as shown below. Once you have installed the battery, the screen indicates the battery status (see table below). If necessary, place the handset in the telephone base or charger to charge the battery. For best performance, keep the handset in the charger when not in use. The battery is fully charged after 16 hours of continuous charging. See the table on the **Technical specifications** page in the user's manual for battery operating times.

If the screen is blank, you need to charge the handset without interruption for at least 10 minutes to give the handset enough charge to use the telephone for a short time. The screen shows **LOW BATTERY** and the backlight is off until you have charged the battery without interruption for at least one hour. The following table summarizes the battery charge indicators and actions to take.

Battery indicators	Battery status	Action
The screen is blank.	Battery has no charge and the handset cannot be used.	Charge without interruption until the screen shows LOW BATTERY (at least 10 minutes).
The screen shows PLACE IN CHARGER and  flashes.	Battery has very little charge and the handset cannot be used.	Charge without interruption until the screen shows LOW BATTERY (at least four minutes).
The screen shows LOW BATTERY and  flashes.	Battery has enough charge to be used for a short time.	Charge without interruption until the screen shows HANDSET X (at least one hour).
The screen shows HANDSET X .	Battery is charged.	To keep the battery charged, place it in the charger when not in use.

 **NOTE:** If you are on a phone call in low battery mode, you hear four short beeps every minute.



Step 1

Plug the battery connector securely into the socket inside the handset battery compartment, matching the color-coded label. Insert the supplied battery with the label **THIS SIDE UP** facing up as indicated.



Step 2

Align the cover flat against the battery compartment, then slide it upwards until it clicks into place.

Battery installation & charging

Step 3

Charge the handset by placing it face up in the charger. The **CHARGE** light will be on when charging.



IMPORTANT INFORMATION

1. Use only the supplied rechargeable battery or replacement battery (model BT8001). To order, visit our website at **www.telephones.att.com** or call **1 (800) 222-3111**. In Canada, dial **1 (866) 288-4268**.
2. If you do not use the handset for a long time, disconnect and remove the battery to prevent possible leakage.

Quick reference guide - handset

CHARGE indicator

On when the handset is charging in the charger.

▼CID/-VOLUME

Press ▼CID to show caller ID history.

Press to scroll down while in menus.

While entering names or numbers, press to move the cursor to the left.

Press to decrease the listening volume when on a call.

☎PHONE/FLASH

Press to make or answer a call.

During a call, press to answer an incoming call when you receive a call waiting alert.

1

While reviewing a call log entry, press repeatedly to add or remove 1 in front of the telephone number before dialing or saving it in the directory.

MUTE/DELETE

During a call, press to mute the microphone.

While reviewing the caller ID history, or the directory or the redial memory, press to delete an individual entry.

While predialing, press to delete digits.

🔊) SPEAKER

Press to turn on the handset speakerphone, press again to resume normal handset use.

MENU/SELECT

Press to show the menu.

While in the menu, press to select an item or save an entry or setting.

DIR▲/+VOLUME

Press DIR▲ to show directory entries.

Press to scroll up while in menus.

While entering names or numbers, press to move the cursor to the right.

Press to increase the listening volume when on a call.

☎ OFF/CLEAR

During a call, press to hang up.

While in a menu, press to cancel an operation, back up to the previous menu, or exit the menu display.

Press and hold while the telephone is not in use to erase the missed calls indicator.

#

Press repeatedly to display other dialing options when reviewing a call log entry.

REDIAL/PAUSE

Press repeatedly to view the last five numbers dialed.

While entering numbers, press and hold to insert a dialing pause.

INT

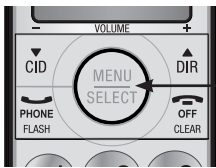
Press to begin an intercom conversation or to transfer a call.



Quick reference guide - handset

Main menu

The > symbol highlights a menu item.



Main menu

ANS. SYSTEM
DIRECTORY
CALL LOG
RINGER VOLUME
RINGER TONE
KEY TONE
LCD LANGUAGE
SET DATE/TIME
CLR VOICEMAIL
HOME AREA CODE

Using menus

Press **MENU/SELECT** to show the main menu.
Press **▼CID** or **DIR▲** to scroll through menu items.

Press **MENU/SELECT** to select or save changes to a highlighted menu item.

Press **OFF/CLEAR** to cancel an operation, back up to the previous menu, or exit the menu display.



NOTE: Use your handset to set up the answering system (see pages 19-22 of the user's manual).

Quick reference guide - telephone base

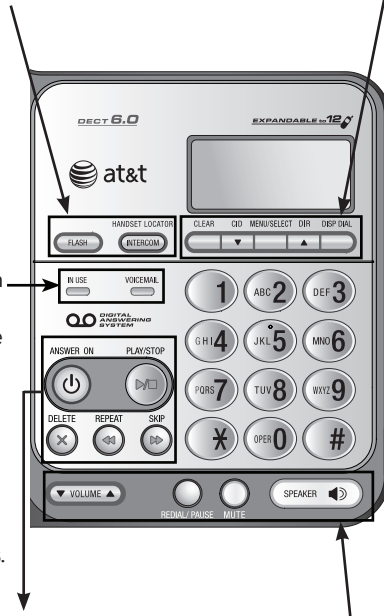
- **INTERCOM/HANDSET LOCATOR:** While phone is idle, press to page all handsets or initiate an intercom call.
- **FLASH:** During a call, press to answer an incoming call when you receive a call waiting alert.

IN USE

- On when a handset is in use, when the answering system is answering an incoming call or you are registering a handset.
- Flashes when another telephone is in use on the same line or you are deregistering handset from the telephone base.
- Flashes quickly when there is an incoming call.

VOICEMAIL

- Flashes when you have new voicemail. Voicemail is a service offered by your telephone service provider and is different from answering system messages.
- **ANSWER ON:** Press to turn the built-in answering system on or off.
- **PLAY/STOP:** Press to start or stop message playback.
- **DELETE:** Press to delete the message currently playing. When in idle mode, press twice to delete all old messages.
- **REPEAT:** Press to repeat the message; press twice to play the previous message.
- **SKIP:** Press to skip the message.



- **CLEAR:** While using menus, press to cancel an operation, back up to the previous menu or exit the menu display.
- **▼ CID:** Press when the phone is idle to display the call history. Press to scroll down while in menus and lists. While entering numbers or letters, press to move the cursor to the left.
- **MENU/SELECT:** Press to show the menu. While in the menu, press to select an item or save an entry or setting.
- **DIR▲:** Press when the phone is idle to display the directory. Press to scroll up while in menus and lists. While entering or modifying names, press to move the cursor to the right.
- **DISP DIAL:** Press to dial the number currently displayed.
- **VOLUME ▲▼:** Press to adjust the volume of the speakerphone (if speakerphone is on), message playback (during playback) or ringer (when the telephone base is not in use).
- **REDIAL/PAUSE:** Before dialing any numbers, press to display the last five numbers dialed. While predialing or entering numbers into your directory, press and hold to insert a dialing pause.
- **MUTE:** Press to turn off the microphone; press again to resume your conversation.
- **🔊 SPEAKER:** Press to switch between speakerphone and corded handset.

Outgoing announcement

An outgoing announcement is the greeting callers hear when calls are answered by the answering system.

The telephone has a prerecorded outgoing announcement, *"Hello. Please leave a message after the tone."* You can use this announcement, or record your own announcement.


You can record an announcement up to 90 seconds. The system does not record any announcement shorter than one second.

Use a handset to record your own announcement:

1. When the handset is in idle mode, press **MENU/SELECT** to enter the main menu.
2. Press **MENU/SELECT** again.
3. Press **▼CID** or **DIR▲** to scroll to **>ANS SYS SETUP**, then press **MENU/SELECT**.
4. Press **▼CID** or **DIR▲** to scroll to **>ANNOUNCEMENT**, then press **MENU/SELECT**, the system announces, *"To play, press 2. To record, press 7."*
5. Press **7** to record an announcement, the system announces, *"Record after the tone, press 5 when you are done."*
6. Press **5** when you finish recording. Your recorded announcement plays.

To listen to the recorded announcement again, press **2** after playback is completed.

To record a new announcement, press **7** and follow the above steps.

 **NOTE:** If the answering system is full and you want to record a new announcement, the system announces, *"Memory is full."* You must delete some messages before you can record a new announcement.

To delete your outgoing announcement:

1. When the handset is in idle mode, press **MENU/SELECT** to enter the main menu.
2. Press **MENU/SELECT** again.
3. Press **▼CID** or **DIR▲** to scroll to **>ANS SYS SETUP**, then press **MENU/SELECT**.
4. Press **▼CID** or **DIR▲** to scroll to **>ANNOUNCEMENT**, then press **MENU/SELECT**, the system announces, *"To play, press 2. To record, press 7."*
5. Press **3** to delete your recorded announcement. The system announces *"Announcement deleted."*

When your announcement is deleted, the system answers calls with the pre-recorded announcement described above.





Proud Sponsor

www.telephones.att.com